

Xstamper

Pre-Inked Stamp Making System

Setup and Operating Manual

[Table of Contents]

1	Safety Precautions	3
2	Parts Description	5
3	Indication Labels	6
4	Setup	7
	Software installation	7
	How to remove Head protection unit and set the Ribbon Cartridge	8
	Connect cable and install driver	9
	Set up LAN connection	12
5	Basic Operations	15
	Power ON / OFF	15
	Power ON	15
	Power OFF	15
	Sleep Mode	15
	Tray Eject / Load	16
	Tray Eject	16
	Tray Load	16
	Emergency Stop of Tray	17
	Emergency Stop	17
	Recovery from the Emergency	17
6	How to print impression die and label	18
	How to set unit of measurement	26
	How to print item code in impression label	27
	How to set the default font	28

7	Typeset function	29
	How to type the text (by using Auto Font Size Adjuster )	29
	How to type the text (by using Manual Font Size Adjuster )	32
	How to typeset curved type	34
	How to draw a straight line	36
	How to draw rectangle	37
	How to draw a oval / circle	39
	Monochrome inversion	39
	Adding a Graphic	40
	Descriptions of the Icons on Tool Bar	46
	How to print proof	48
	How to save	49
	How to open a previously saved file	49
8	How to clean the Cartridges (Q16/Q18/Q24)	50
	How to clean	50
9	How to change the Ribbon Cartridge	51
10	How to change the Fan Filter	53
11	How to change the Thermal Head	54
12	Error Messages	58
13	Specification	59
	Specification	59

1 Safety Precautions

Please carefully read these “Safety Precautions” before use then use them properly.

Notes presented here are for safety and proper use of the product in order to avoid damages and injuries to the operators and other personnel during the operation.

“Warning” and “Caution” are used to indicate the levels of damage or injury which might be incurred by improper operation ignoring the precautions.

Please observe the instructions for your safety and conservation of equipment.

⚠ WARNING: Indicates a potentially hazardous situation which, if not avoided, will result in death or serious injury.

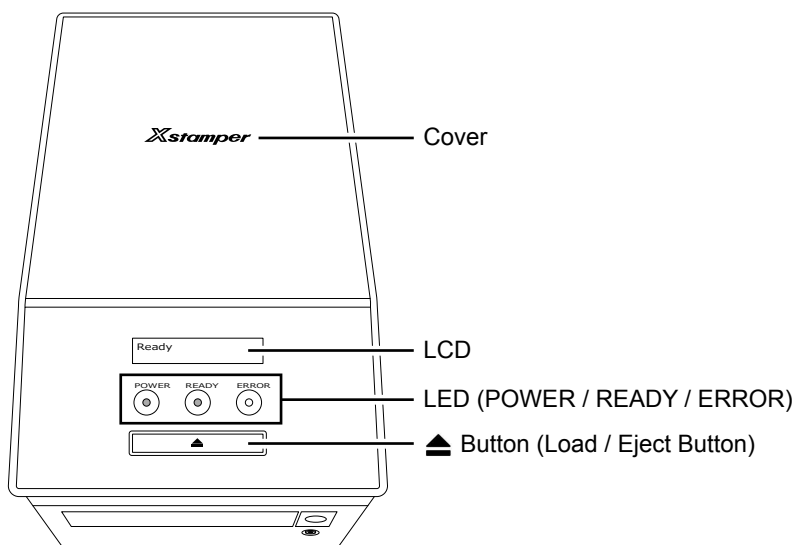
- Pull out the power plug, when smoke, strange smell, noise or other abnormal movement happens.
Failure to observe this instruction could result in fire or electrical shock.
Make sure that the smoke is not coming out anymore from the *Xstamper Pre-Inked Stamp Making System*, then bring the *Xstamper Pre-Inked Stamp Making System* to the distribution agent for repair.
- Do not place at imbalance place.
Failure to observe this instruction could result in injury breakdown and damage.
- Do not open inside the *Xstamper Pre-Inked Stamp Making System*, disassemble or modify the inside parts.
Failure to observe this instruction could result in electrical shock, fire or damage.
If abnormal movement happens, take the *Xstamper Pre-Inked Stamp Making System* to the distribution agent for repair.
- Do not use if the *Xstamper Pre-Inked Stamp Making System* was dropped or its cover has been broken.
Failure to observe this instruction could result in fire or electrical shock.
- Do not damage the power cables.
Failure to observe this instruction could result in fire or electrical shock.
- Keep liquids away from the *Xstamper Pre-Inked Stamp Making System*.
Failure to observe this instruction could result in fire or electrical shock.
- Use AC cable enclosed. AC cable varies according to its area.
 - A plug spec. : AC100 - 125V
 - C plug spec. : AC100 - 240V
 Failure to observe this instruction could result in fire or electrical shock.
Do not use AC adaptor other than which is packed together with the *Xstamper Pre-Inked Stamp Making System*.

⚠ CAUTIONS: Indicates a potentially hazardous situation which, if not avoided, will result in minor injury or property damage.

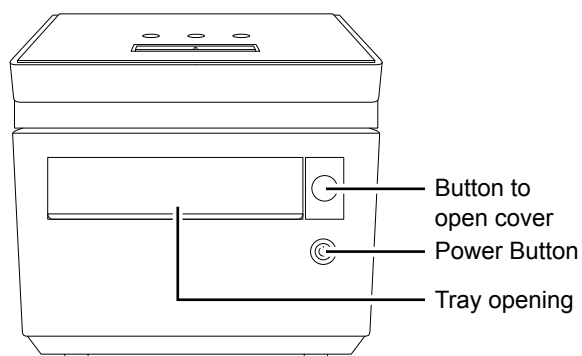
- Do not place the *Xstamper Pre-Inked Stamp Making System* in the following places;-
 - A humid or dusty place.
 - Exposed to oil or steam.
 - Exposed to direct sunlight.
 - Near heating equipment.
 - Exposed to high temperatures.If placed at above places, cover of power cable could melt, and could result in fire, electrical shock and deformation.
- Do not place the *Xstamper Pre-Inked Stamp Making System* where there is bad ventilation or closed place. Failure to observe this instruction could result in fire, electrical shock, breakdown or deformation, due to heat being accumulated inside the *Xstamper Pre-Inked Stamp Making System*.
- Do not move the *Xstamper Pre-Inked Stamp Making System* while cable is connected. Failure to observe this instruction could result in breakdown.
- Do not connect or disconnect the power cables with wet hands.
Failure to observe this instruction could result in electrical shock.
- Pull the power cable from its root.
Failure to observe this instruction could result to damage in power cable, fire or electrical shock.
- Cleaning to be done after disconnecting the power cable of *Xstamper Pre-Inked Stamp Making System*.
Wipe with a dry cloth, cloth soaked in water or neutral detergent if necessary.
Do not use volatile liquids such as thinner or benzene.
- *Xstamper Pre-Inked Stamp Making System* is for indoor use only. Not for outdoor use.

2 Parts Description

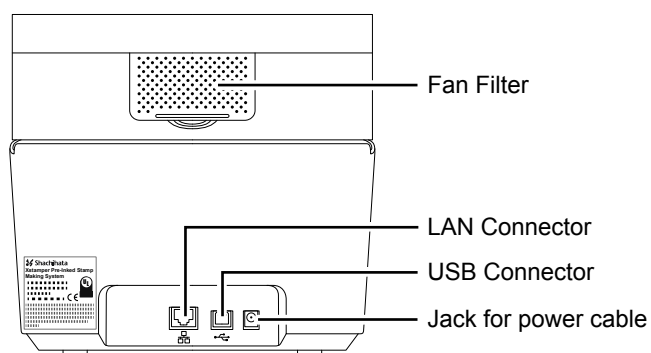
Top face



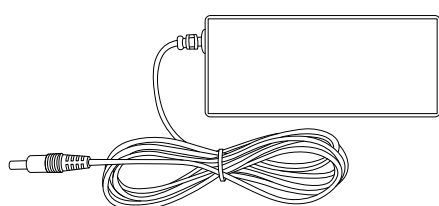
Front side



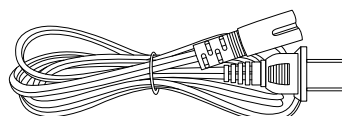
Back side



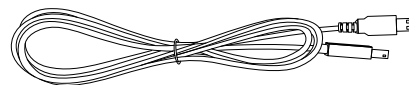
Accessories



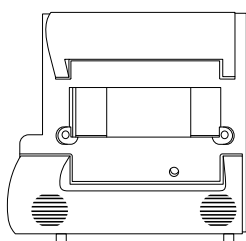
AC adaptor 1pc



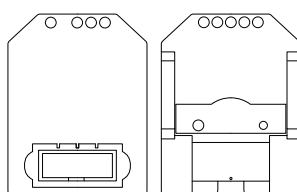
AC cable 1pc



USB cable 1pc

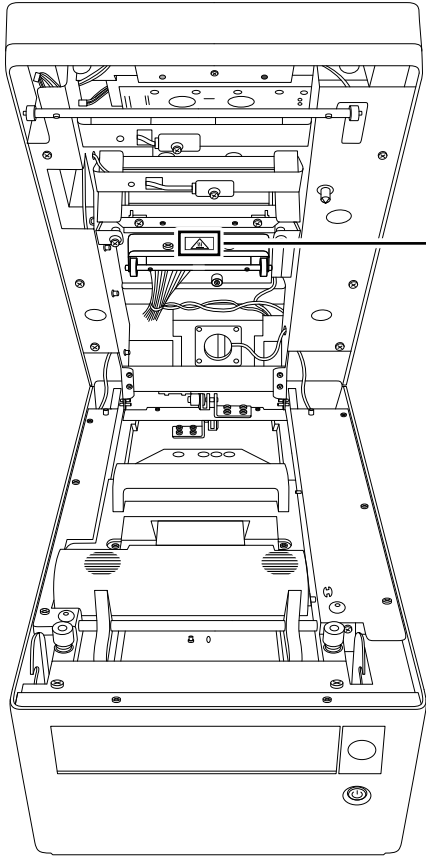


Ribbon Cartridge 1pc

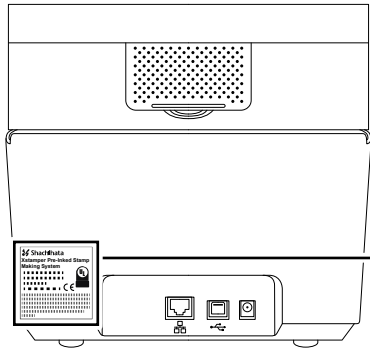


Impression Die Cartridge and Label Cartridge in various sizes

3 Indication Labels



High temperature Label



Name Plate Label

Shachihata
Xstamper Pre-Inked Stamp
Making System
MODEL : ESTM-H
S / N : 0000000001
24V \equiv 2.7A
MADE IN JAPAN **CE** **UL** I.T.E.

This device complies with Part 15 of the FCC Rules.
Operation is subject to the following two conditions:
(1) This device may not cause harmful interference,
and (2) this device must accept any interference,
including interference that may cause undesired
operation.

4 Setup

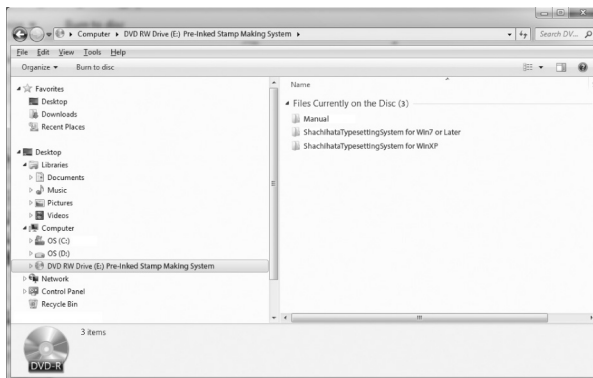
Software installation

1 Set the installation CD-ROM in the CD drive of operating computer.

Software is different for Windows XP and Windows 7 or later.

Click the folder which matches to your Windows version then start installing the software as per the procedure.

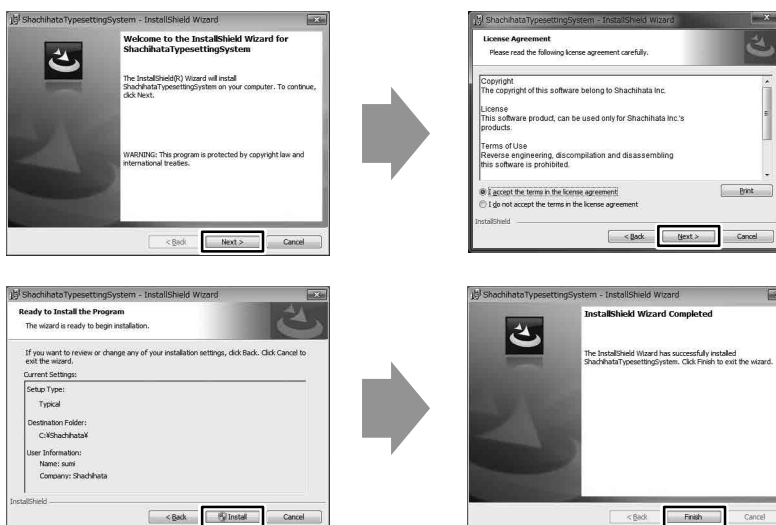
* Beware not to install the different version. It may cause trouble to your PC.



2 Double click the setup.exe from Explorer.



3 Install as per the directions on screen.

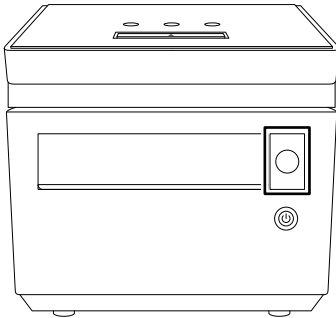


4 Icon below will show on the screen when the setup is completed.

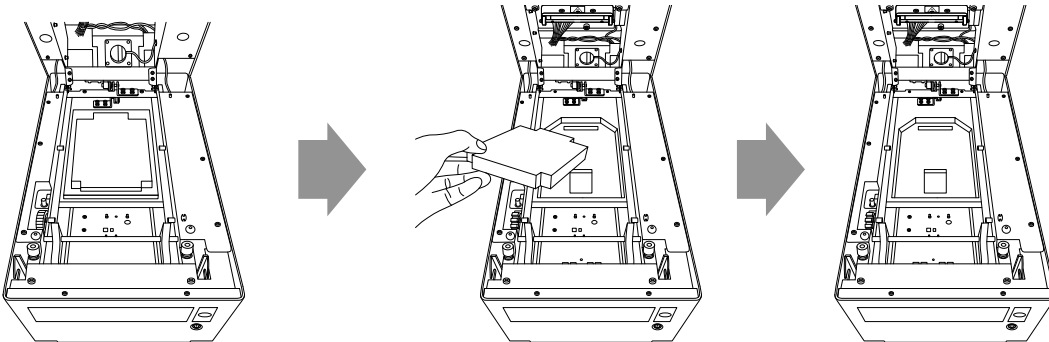


How to remove Head protection unit and set the Ribbon Cartridge

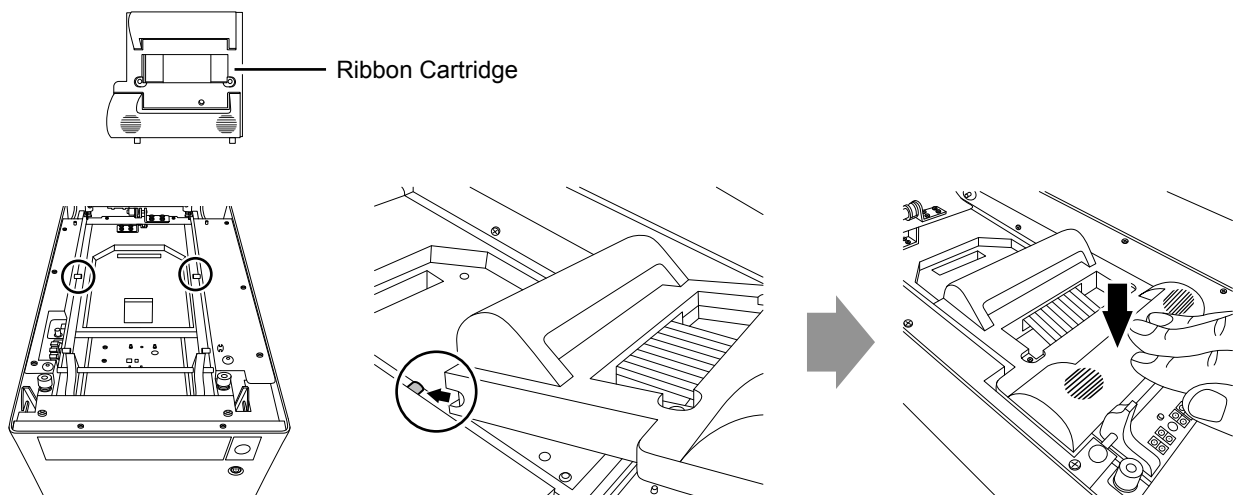
- 1** Push the button to open cover to release the lock and then the cover will rise a little. Lift and open the cover until the cover stops.



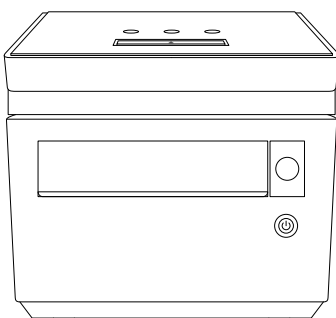
- 2** Remove the Thermal Head protection unit.



- 3** Set the Ribbon Cartridge.

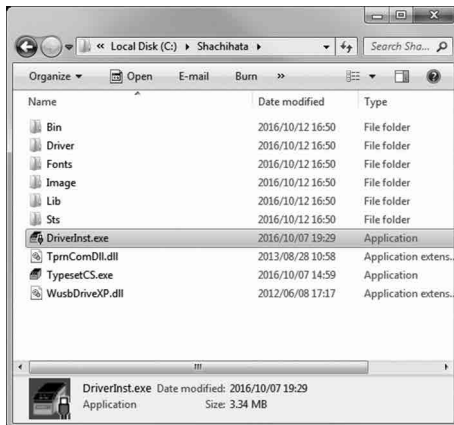


- 4** Close the cover.

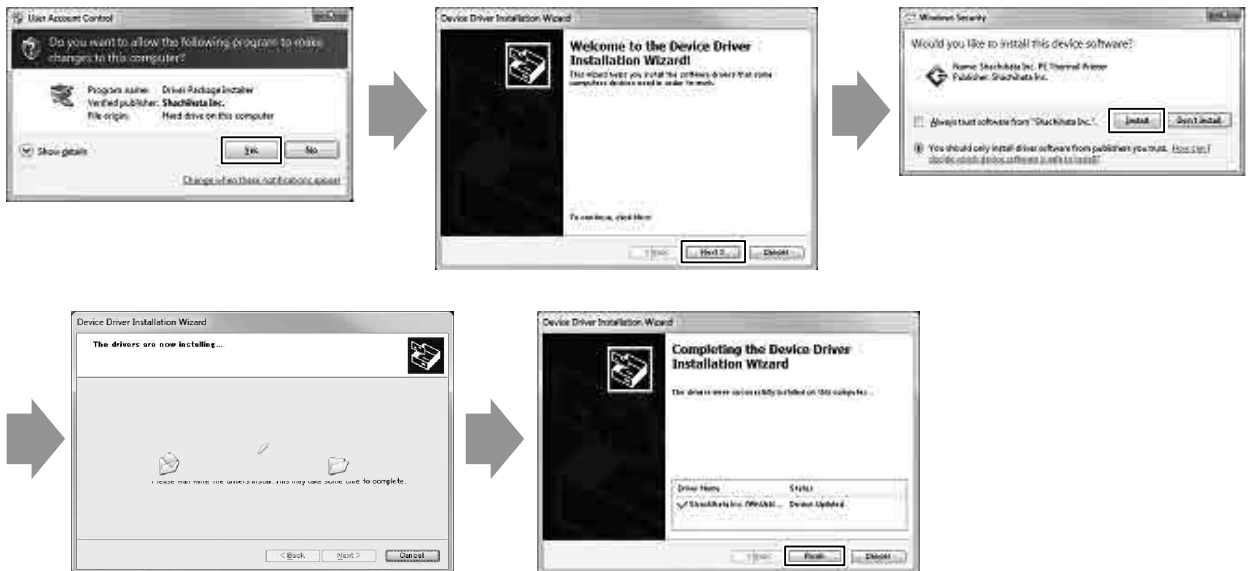


Connect cable and install driver

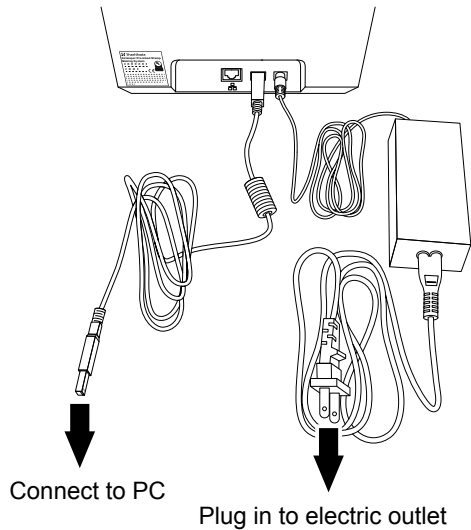
1 Execute "DriverInst.exe" in the " C:\Shachihata " folder.



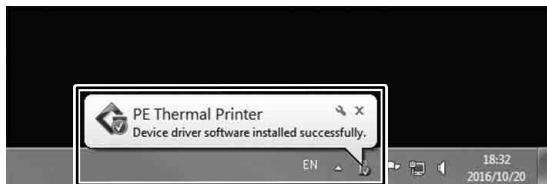
2 Keep installing according to the message on screen.



- 3** *Connect the Xstamper Pre-Inked Stamp Making System and PC using a USB cable, then turn ON the power of the Xstamper Pre-Inked Stamp Making System.*



- 4** *The message below will appear when installation is successful.*





* Some OS may check for the latest driver, using Windows Update.

Since there is no need to check using Windows Update, you can skip the followings.

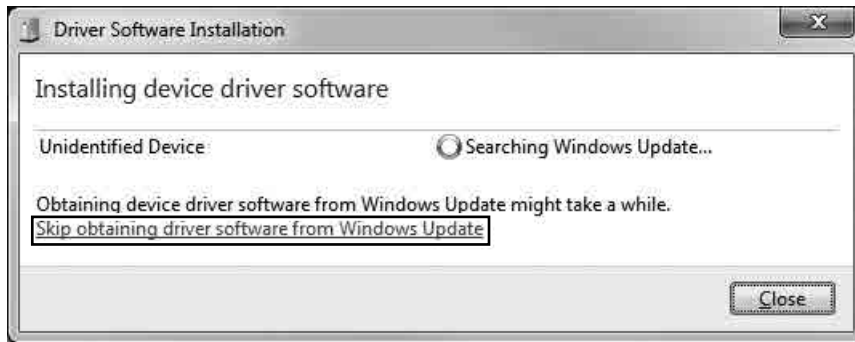
- 5** *Click on the "Installing device driver software" message when it appears at the lower right of the screen.*



This message disappears in few seconds, and in this case, click on  → .



- 6** While checking using Windows Update, click "Skip obtaining driver software from Windows Update".



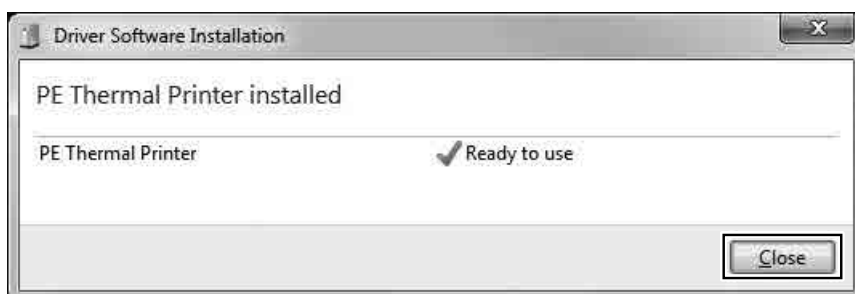
- 7** Click [Yes].



- 8** It might take a while (approximately 10 seconds to 30 seconds) to skip Windows Update.



- 9** The screen below will appear when installation is successful. Click the [Close] button.



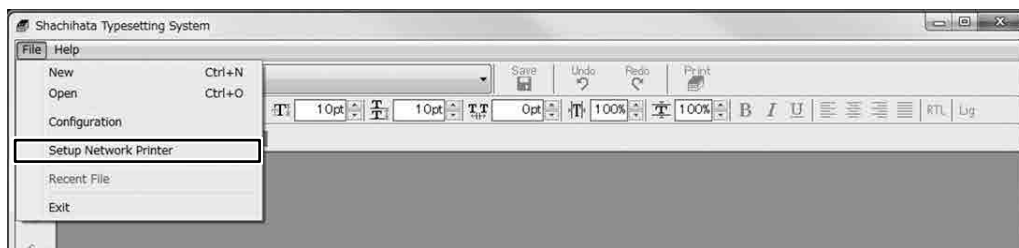
Set up LAN connection

* No need to set LAN connection when used by USB connection only.

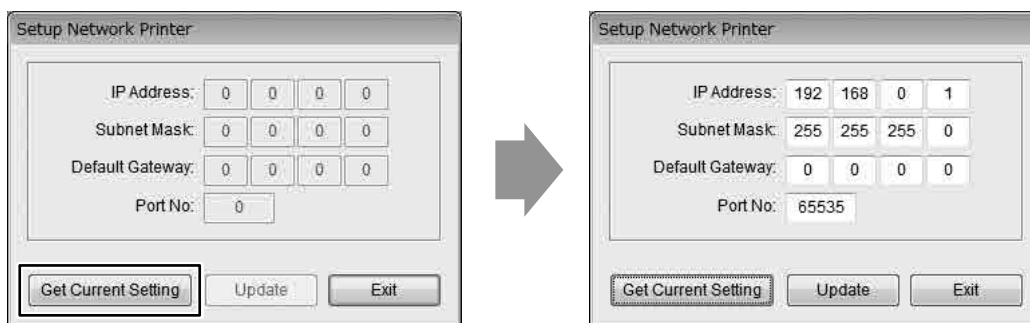
- 1** Turn Power ON the Xstamper Pre-Inked Stamp Making System. Connect Xstamper Pre-Inked Stamp Making System and operating PC by USB cable.
- 2** Double click Shachihata Typesetting System icon.



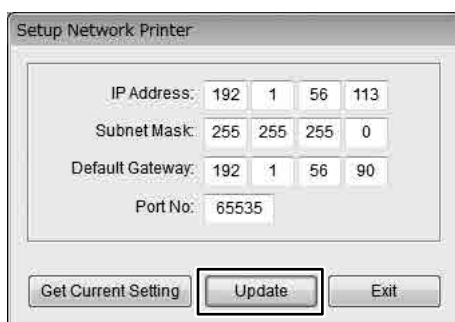
- 3** Click on [Setup Network Printer] from the [File] menu.



- 4** Click on [Get Current Setting] button. Current setting will appear on the screen.

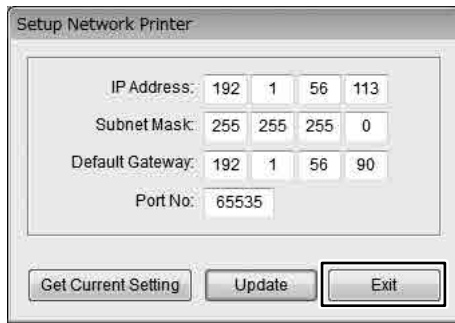


- 5** Change [IP Address], [Subnet Mask] and [Default Gateway]. Then click on [Update] button.

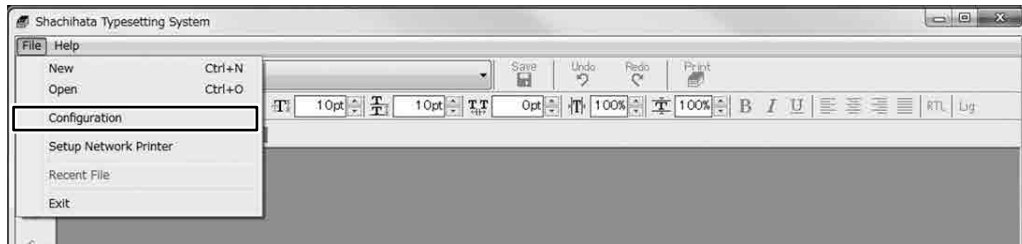


* Please contact administrator for setting value of [IP Address], [Subnet Mask] or [Default Gateway] etc.

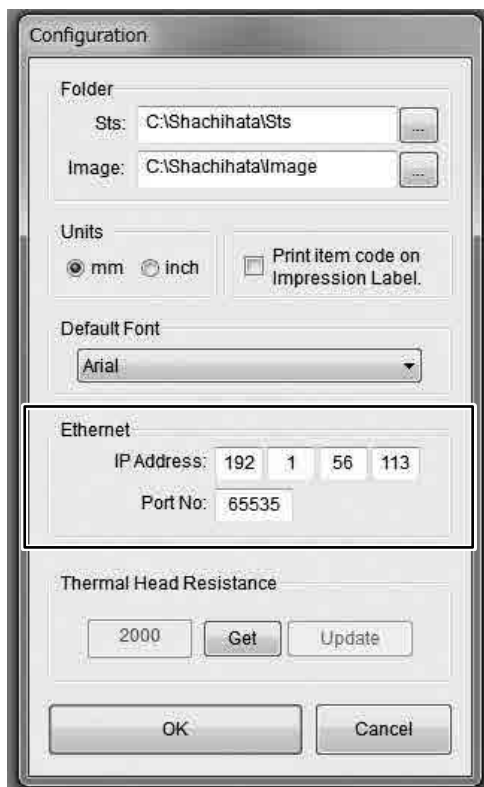
6 Click on [Exit] button to finish the setup.



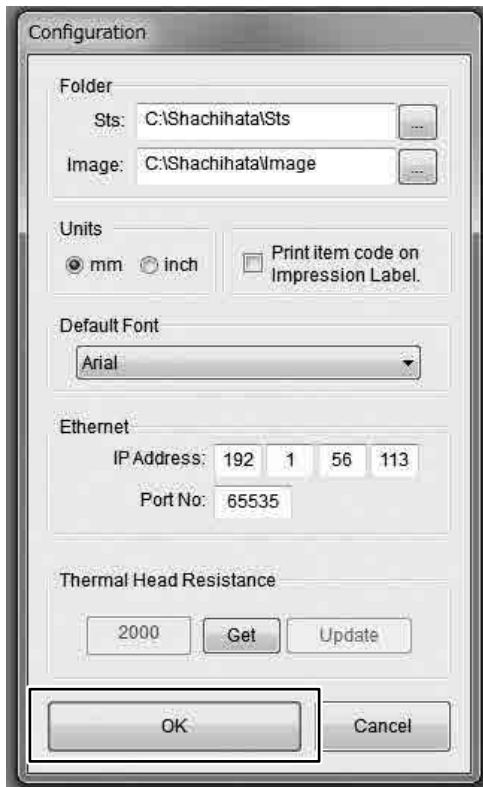
7 Click on [Configuration] from the [File] menu.



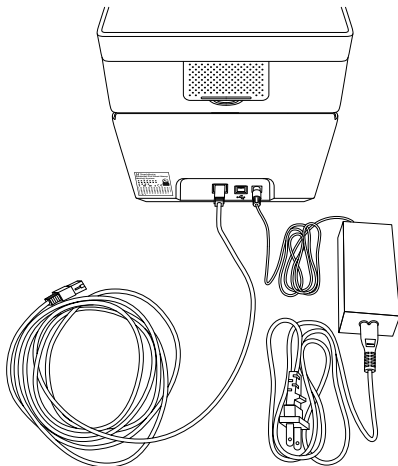
8 Enter the same IP Address and Port No. in [Ethernet].



9 Click on [OK] button to finish the setup.



10 Connect the LAN cable to Xstamper Pre-Inked Stamp Making System. Connect the other end of LAN cable via HUB to PC.



Note

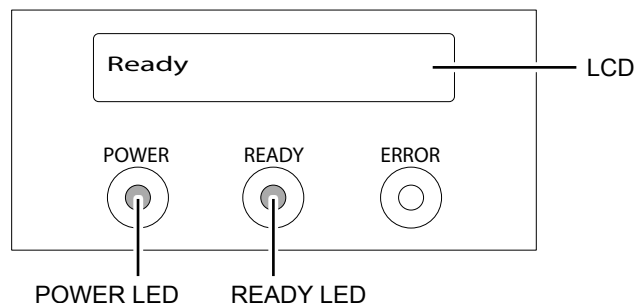
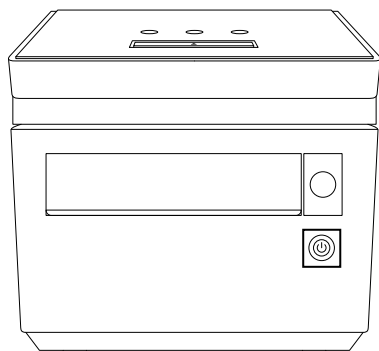
- * When both USB cable and LAN cable are connected, USB network will take a priority.
- * Use Category 7 LAN cable to connect to the Xstamper Pre-Inked Stamp Making System.

5 Basic Operations

Power ON / OFF

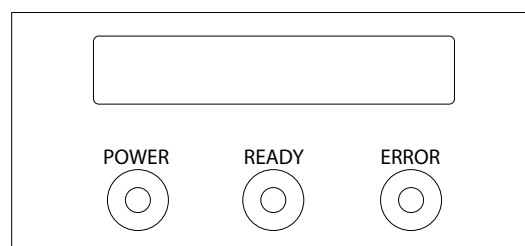
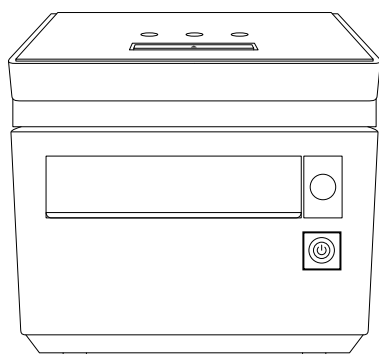
Power ON

Push Power Button of the *Xstamper Pre-Inked Stamp Making System*, POWER LED will light up and Power will be ON. Then, initialization will start and when that is finished, LCD indication will be changed to "Ready".



Power OFF


Power will be OFF when Power Button is pushed for more than 2 seconds. LCD indication will be off and POWER LED and READY LED lights will be out.



Sleep Mode

The Xstamper Pre-Inked Stamp Making System changes to Sleep mode when is not used for more than 15 minutes with the power ON.

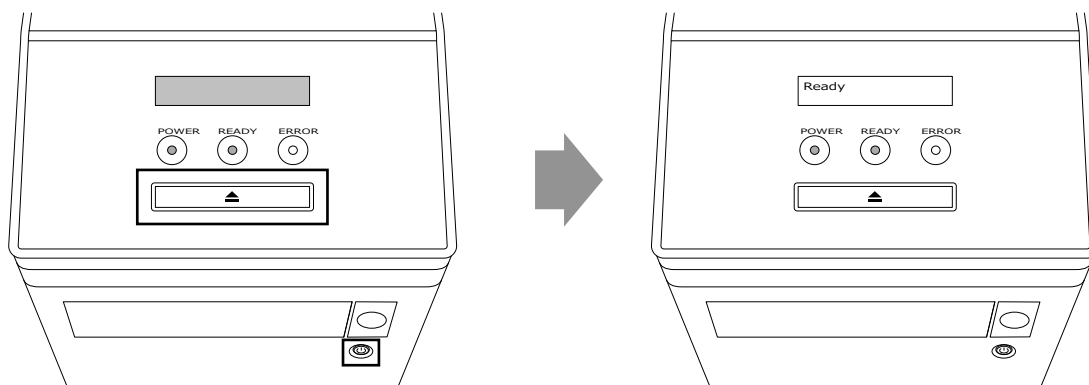
In Sleep mode, the display on the LCD disappears and the POWER LED blinks.

Click the  button or power button to cancel Sleep mode.

After initializing, the "Ready" message will be displayed on the LCD, then the POWER and READY LEDs light up.

* Sleep mode can be cancelled automatically if data is sent from the PC.

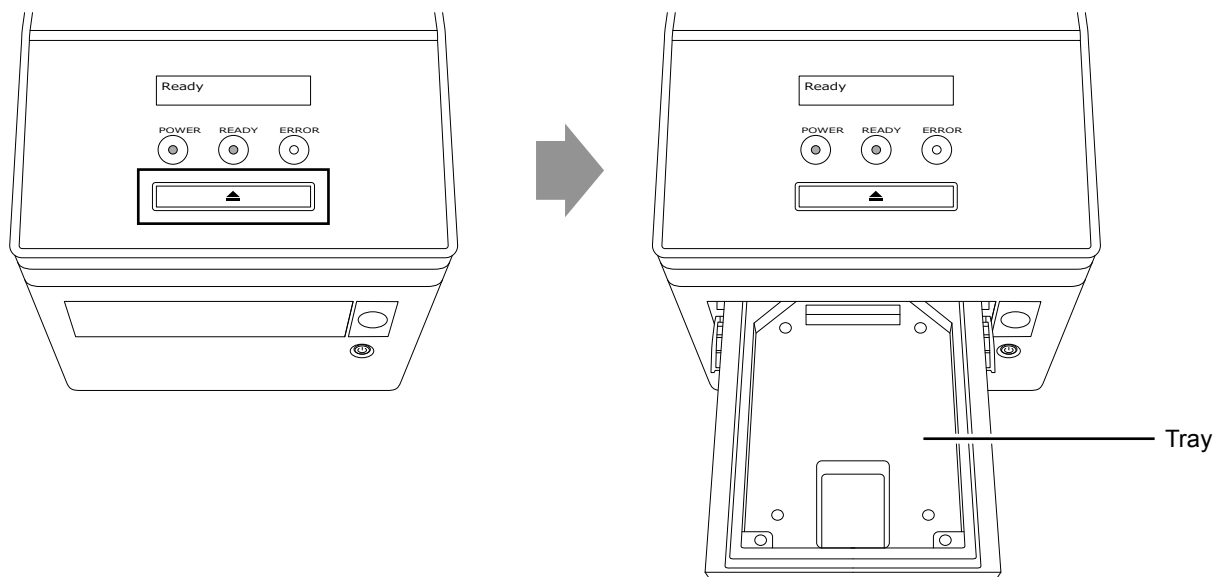
Also in this case, the Xstamper Pre-Inked Stamp Making System starts operations after initializing.



Tray Eject / Load

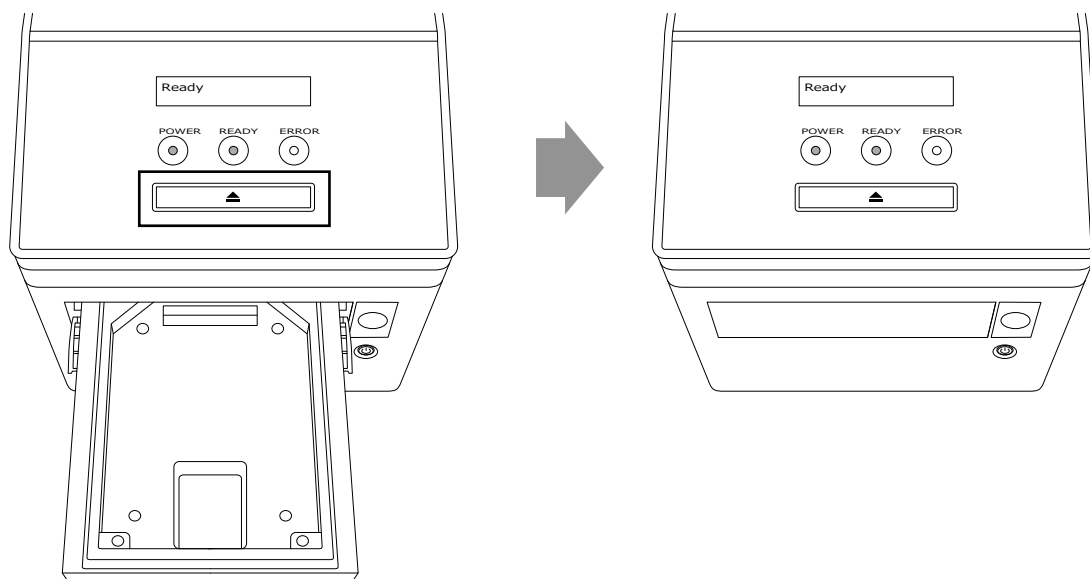
Tray Eject

When Tray is already loaded inside the *Xstamper Pre-Inked Stamp Making System*, Tray will eject if you push the ▲ Button.



Tray Load

When Tray is ejected out from the *Xstamper Pre-Inked Stamp Making System*, Tray will load if you push the ▲ Button.

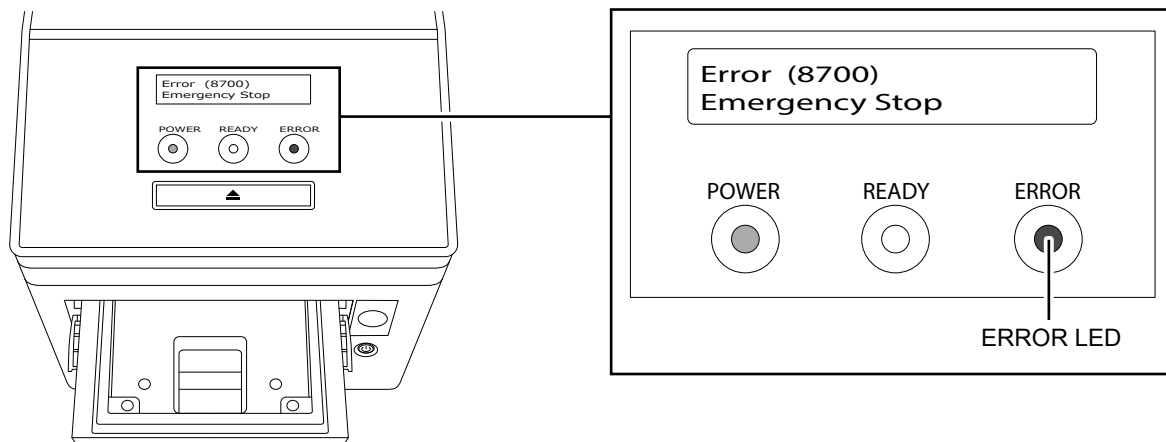


Emergency Stop of Tray

Emergency Stop

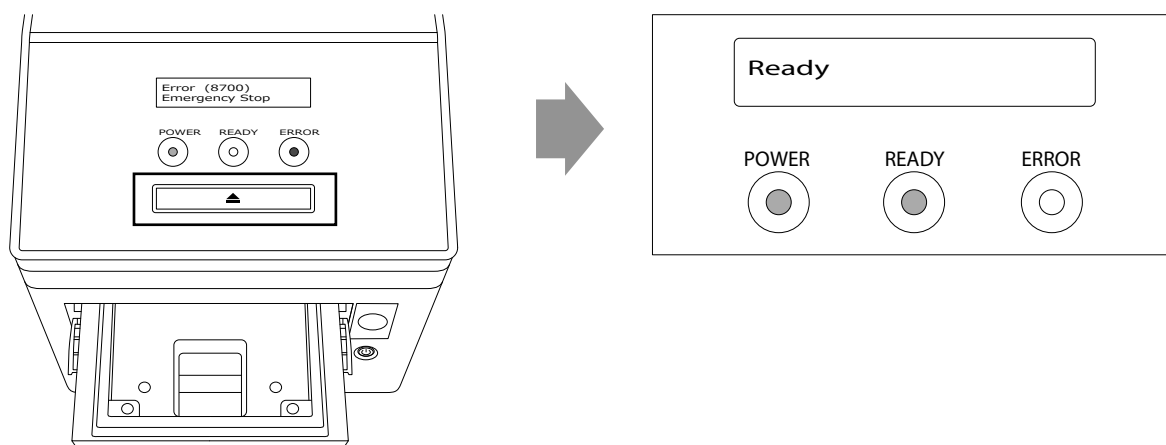
Push ▲ Button when Tray is loading / ejecting from the *Xstamper Pre-Inked Stamp Making System*, then it will stop.

* When Emergency Stop occurs, LCD indication will say "Error (8700) Emergency Stop" and ERROR LED will light up.



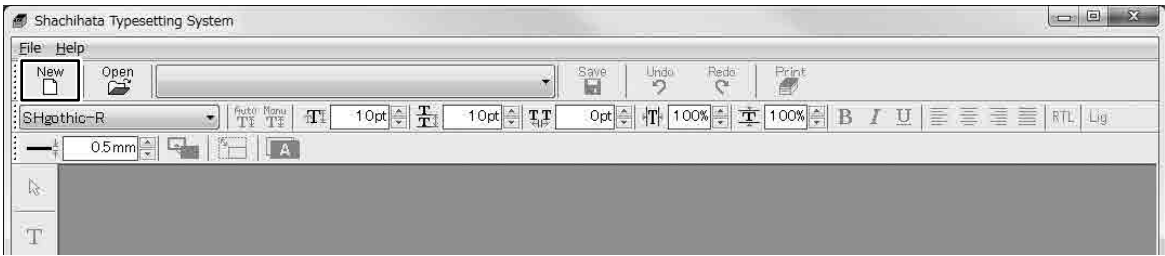
Recovery from the Emergency

Push ▲ Button for more than 2 seconds then LED will be initialized and LCD indication will say "Ready".

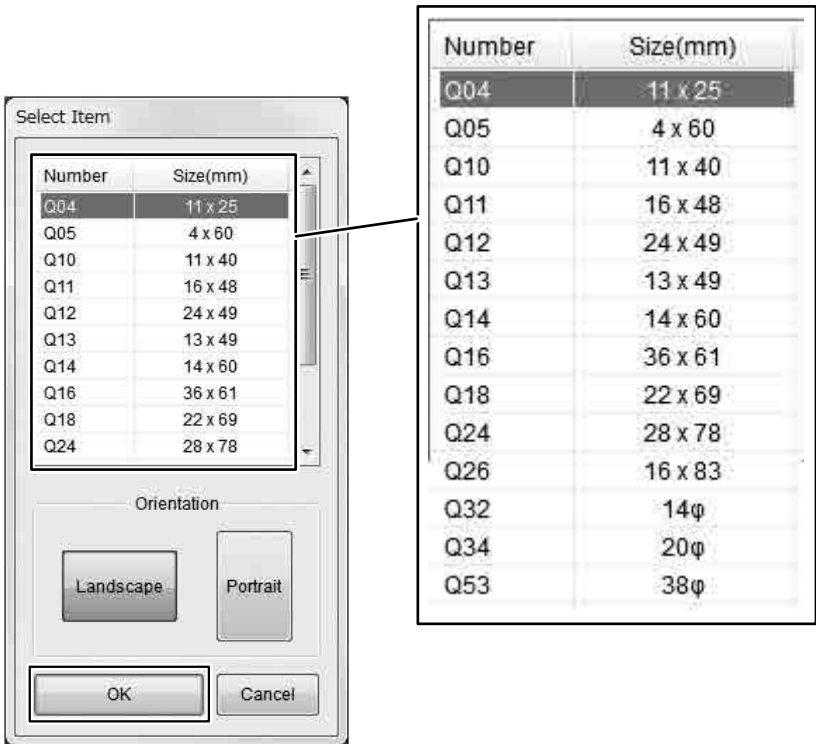


6 How to print impression die and label

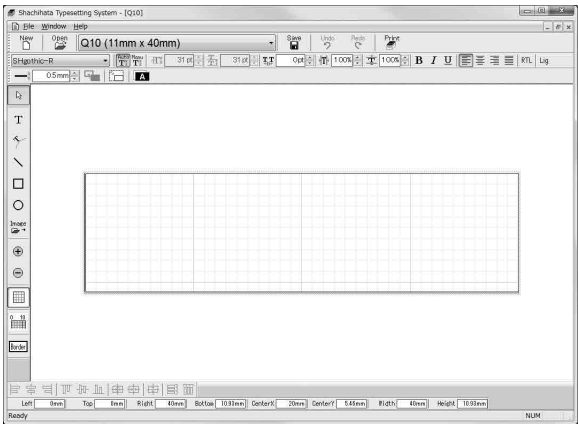
1 Click on  button in the tool bar.



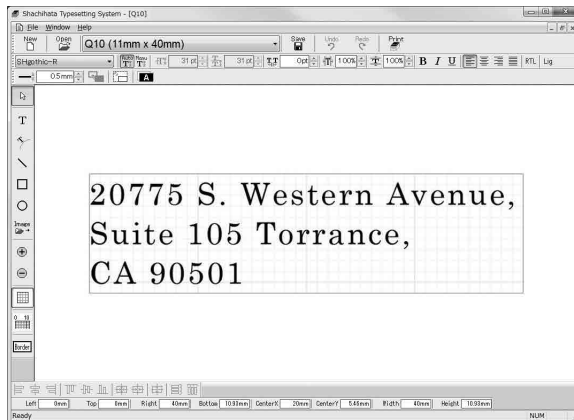
2 Select the impression size then click on [OK] button.



3 Blank template will appear.

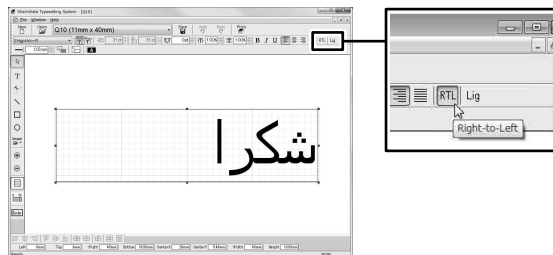


4 For English Type in the text.



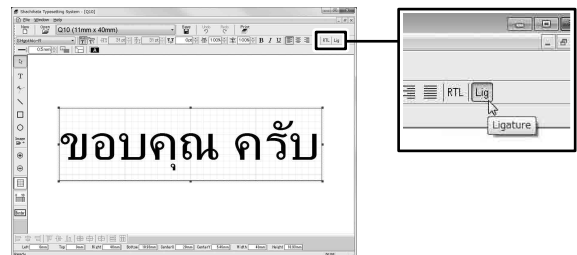
For other than English

■ **Right-to-Left language (for example, Arabic):**
Click [RTL] (Right-to-Left) button, then type in the text.



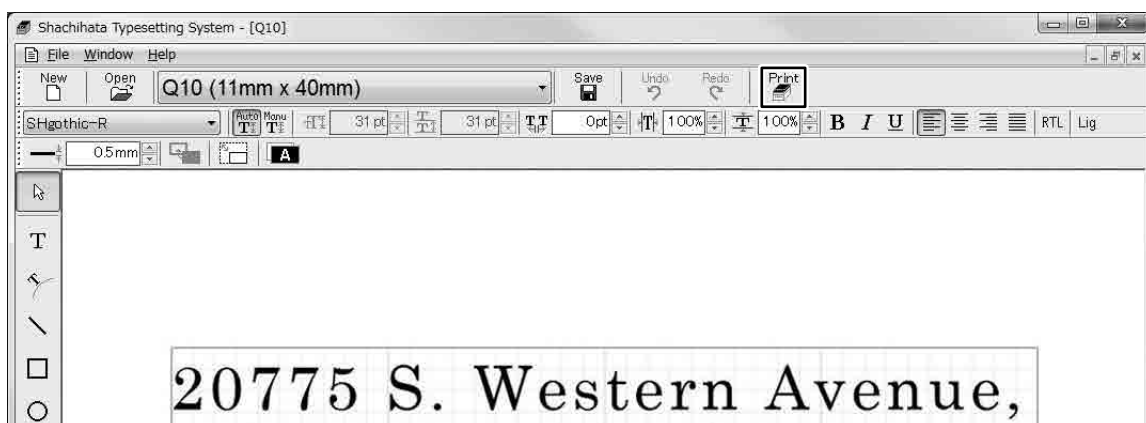
If you not click [RTL] (Right-to-Left) button, the text not be displayed correctly.

■ **Ligature language (for example, Thailand):**
Click [Lig] (Ligature) button, then type in the text.

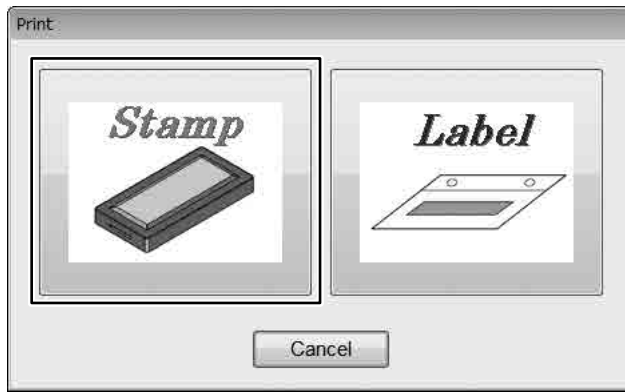


If you not click [Lig] (Ligature) button, the text not be displayed correctly.

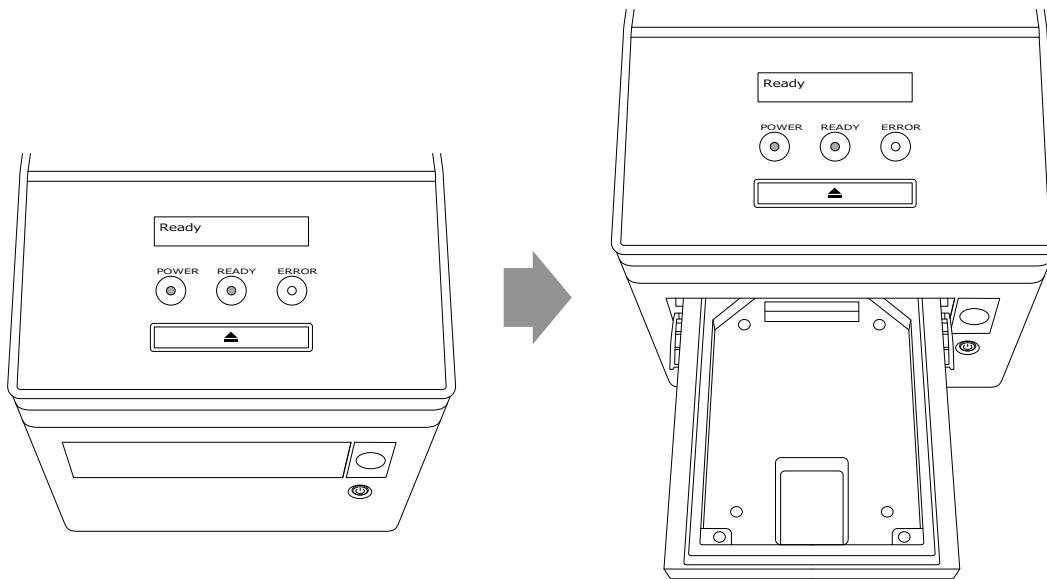
5 Click on button from the tool bar when the impression artwork is done.



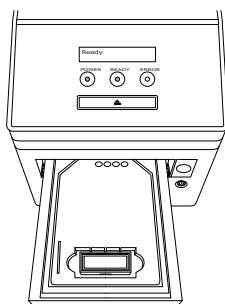
6 Click on [Stamp] button.



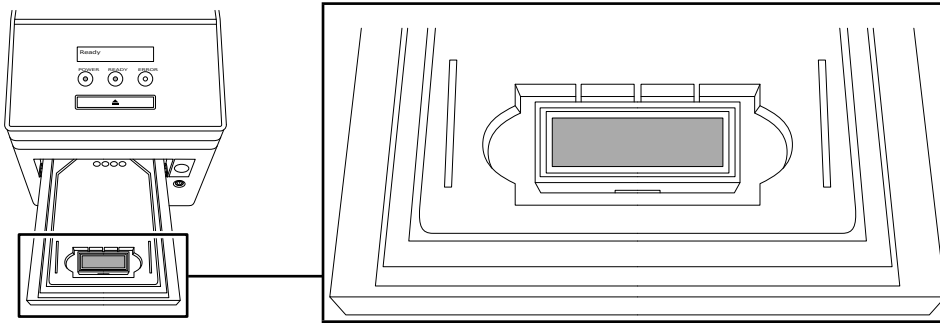
7 Tray will eject from Xstamper Pre-Inked Stamp Making System.



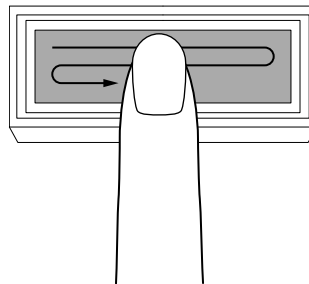
8 Load the Impression Die Cartridge into the Tray which match the impression size you are going to print.



9 Load the Impression Die into the Impression Die Cartridge.




*** In order to get the best results in processing Impression Die, any dust on both sides should be removed before Impression Die is loaded on Impression Die Cartridge.**

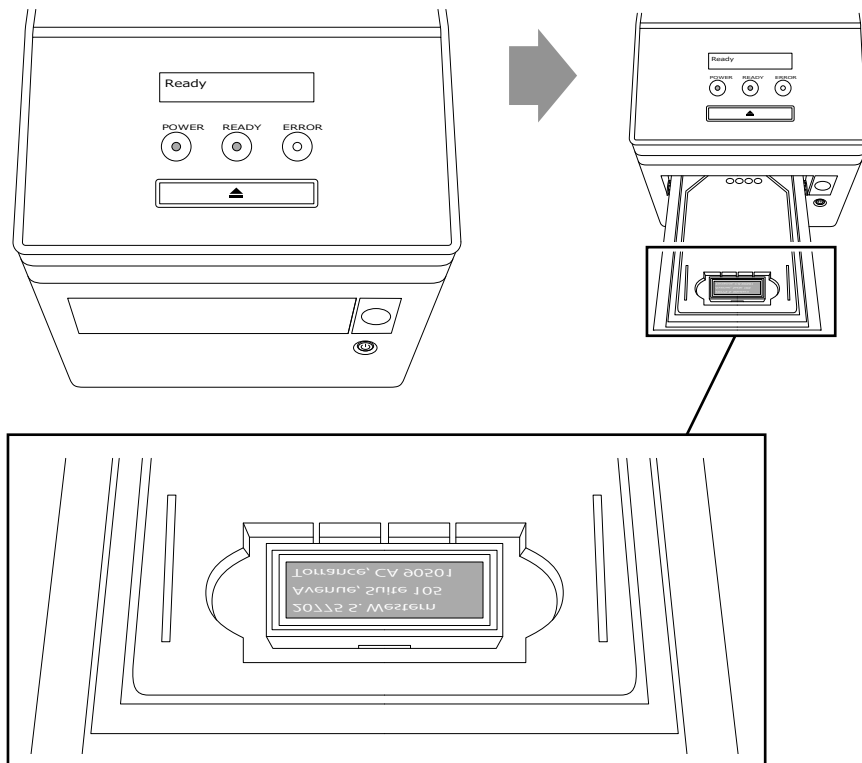


10 Tray will load into the Xstamper Pre-Inked Stamp Making System and printing will start when you click [OK] button.

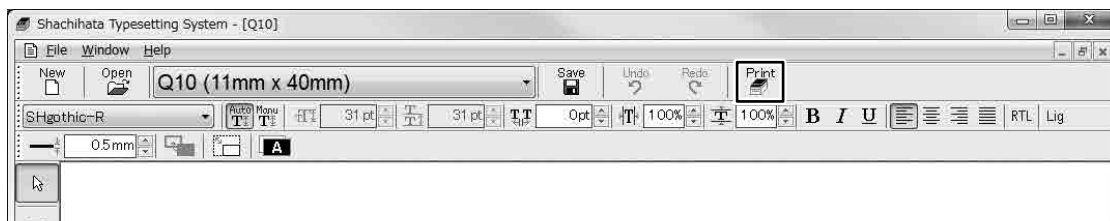


*** Even if you click the [OK] button, the Xstamper Pre-Inked Stamp Making System does not operate since it is disconnected when left for more than 30 seconds. In this case, click the  button to rerun printing.**

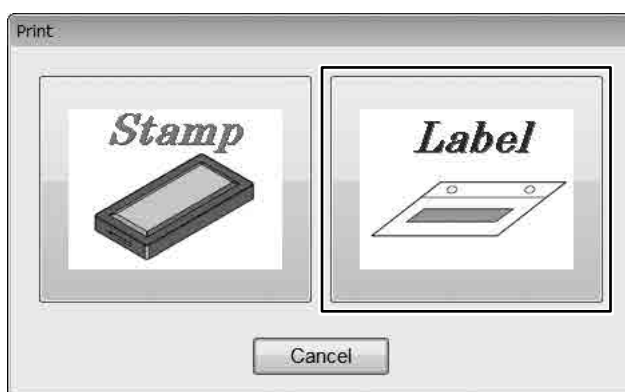
11 Tray will eject after printing is done. Take out the printed Impression Die from the cartridge.



12 Then click on  button from the tool bar.

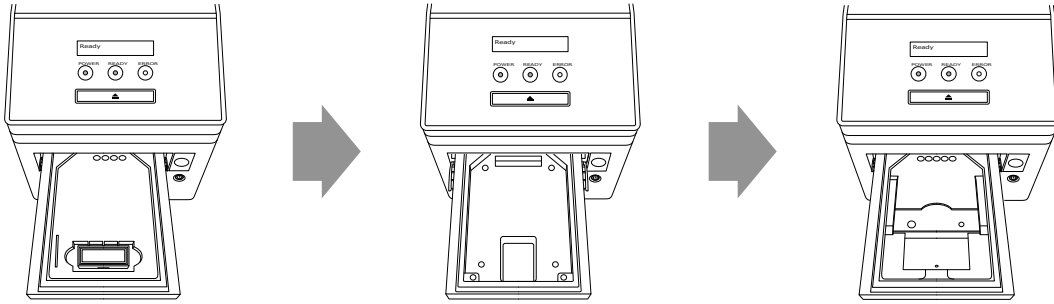
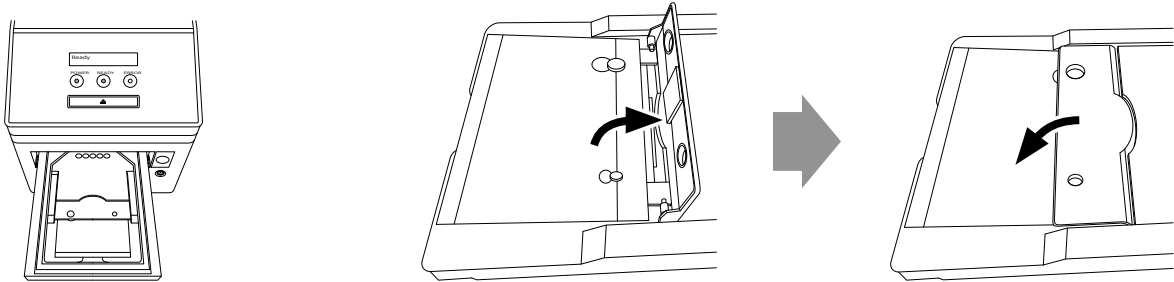



13 Click on [Label] button.

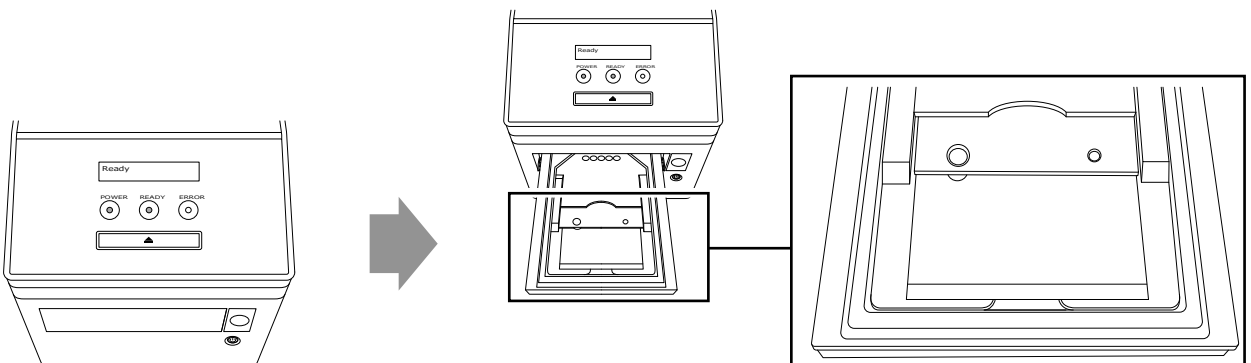


Select the Ink Color then click on [OK] button.



14 Change to Label Cartridge.**15 Set the label on to the Label Cartridge.****16 Tray will load into the Xstamper Pre-Inked Stamp Making System and printing will start when you click [OK] button.**

- * Even if you click the [OK] button, the Xstamper Pre-Inked Stamp Making System does not operate since it is disconnected when left for more than 30 seconds. In this case, click the  button to rerun printing.

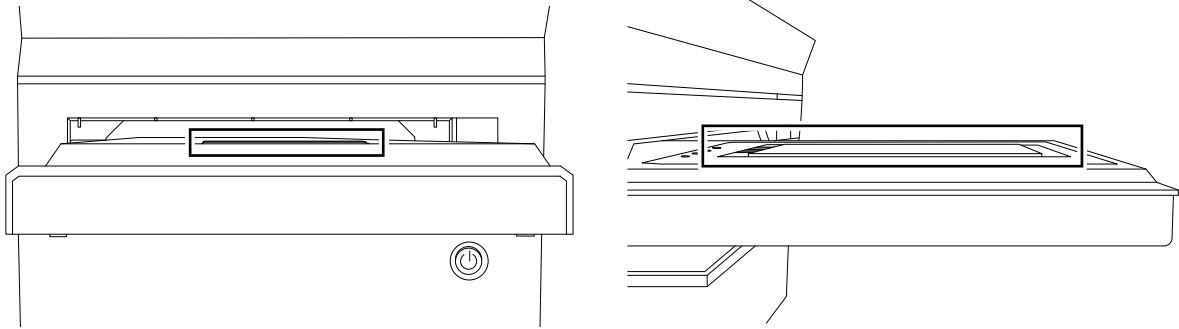
17 Tray will eject after printing is done.

18 Take out the printed label from the Label Cartridge.

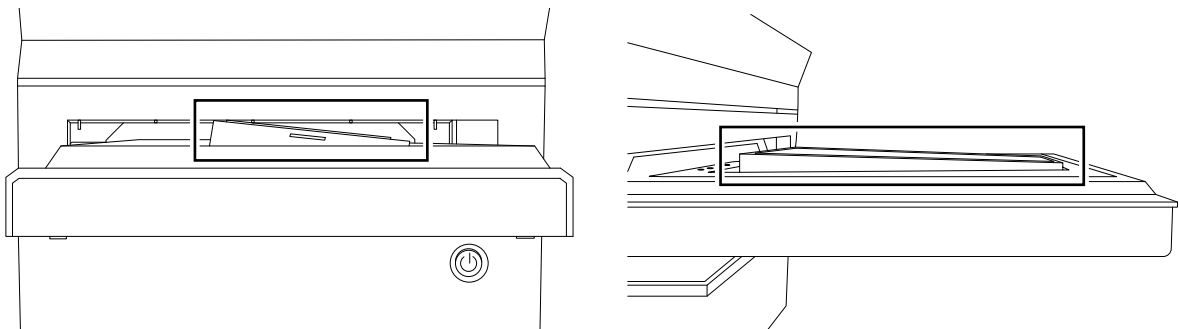
- ⚠ **Be sure to load the Impression Die into the Impression Die Cartridge correctly. Impression Die should not float or tilt.**

In case thermal printing is done by Impression Die not loaded correctly, it may cause printing defect or may causes damage to the Thermal Head Protection Ribbon.

○ **Example of CORRECT way to load the Impression Die**

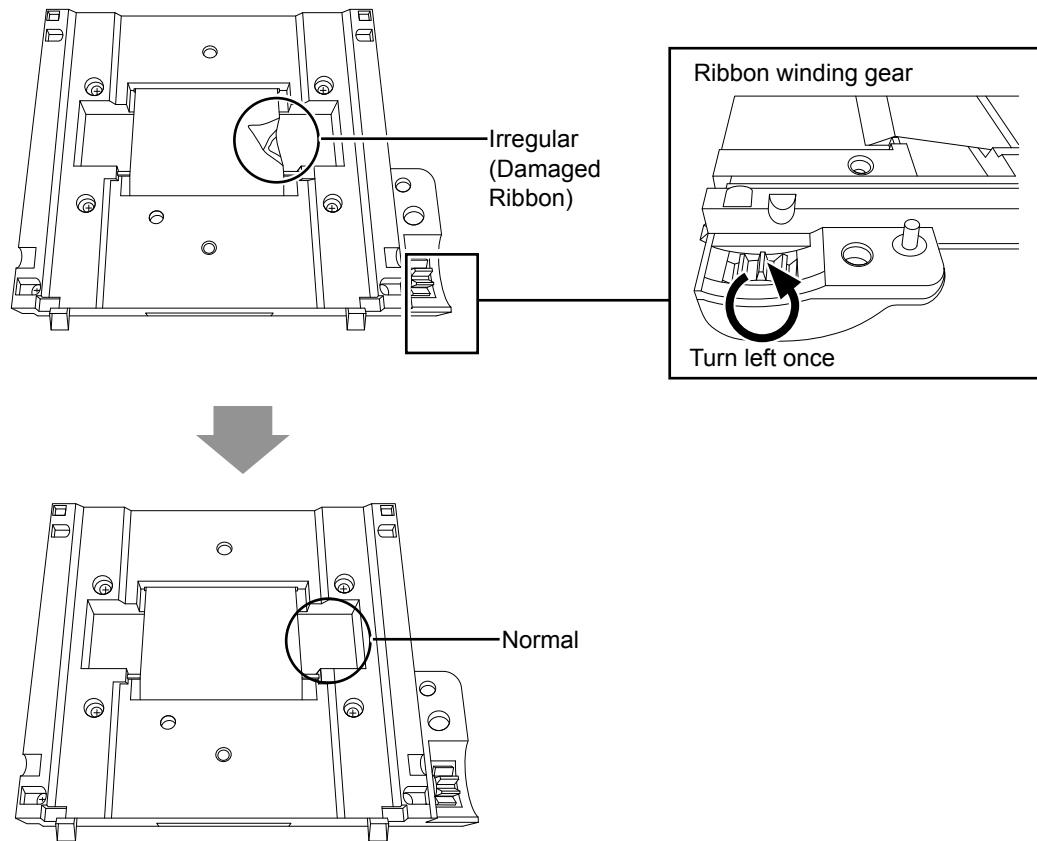


⊗ **Example of INCORRECT way to load the Impression Die.**



In case Thermal Head Protection Ribbon is damaged, turn the Ribbon winding gear once to left so the damaged Ribbon will move out and fresh Ribbon will appear. (Winding is available 3 turns maximum)

*** If the Ribbon Cartridge is damaged and need to be replaced, refer to P51 .**



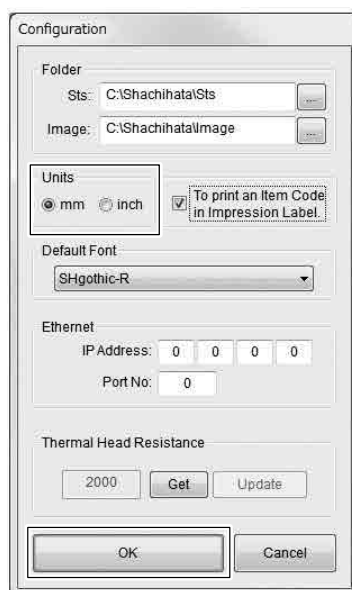
How to set unit of measurement

Unit of measurement can be chosen from "mm" or "inch" for size, line thickness and adjustment setting (margins, position) . * Please refer to p46 "Descriptions of the Icons on Tool Bar".

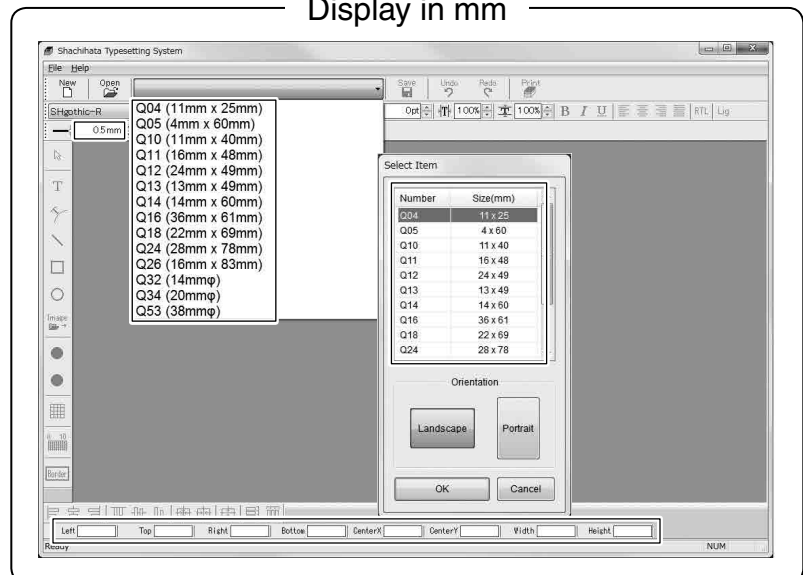
1 Click on [Configuration] from the [file] menu.



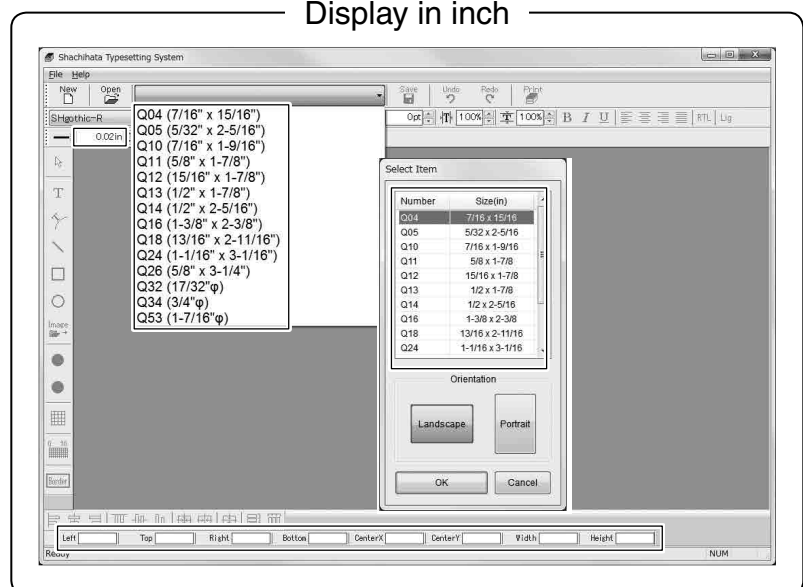
2 Click on [OK] after choosing "mm" or "inch".



Display in mm



Display in inch



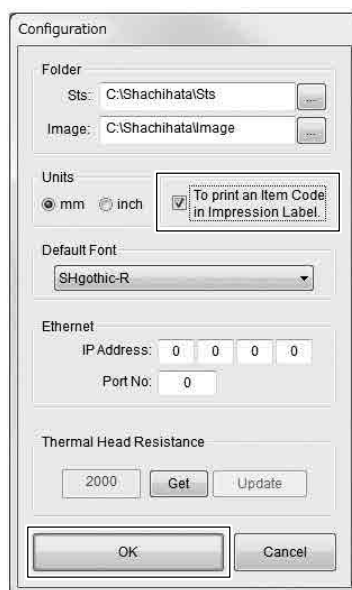
How to print item code in impression label

Item code can either be printed or not printed to the impression label.

1 Click on [Configuration] from the [File] menu.



2 Click on [OK] after checking the box to print item code.



Impression code ON



Put check mark

Shachihata (Malaysia) Sdn. Bhd.
Plo 164, Jln. Angkasa Mas Utama,
Kaw. Perindustrian Tebrau II, 81100
Johor Bahru, Johor, Malaysia
Tel : +60 7 353 5955
Fax : +60 7 353 5916

Impression code OFF



Remove check mark

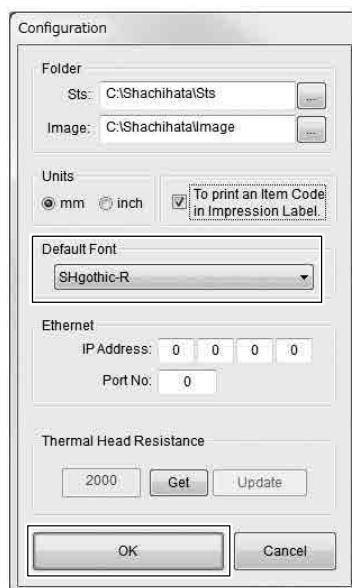
Shachihata (Malaysia) Sdn. Bhd.
Plo 164, Jln. Angkasa Mas Utama,
Kaw. Perindustrian Tebrau II, 81100
Johor Bahru, Johor, Malaysia
Tel : +60 7 353 5955
Fax : +60 7 353 5916

How to set the default font

- 1 Click on [Configuration] from the [File] menu.



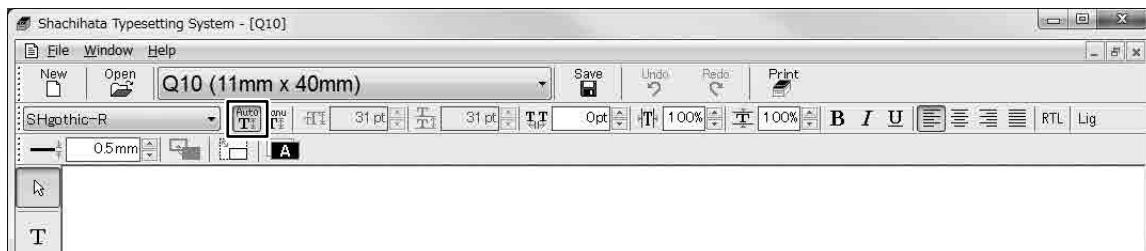
- 2 Click on [OK] after choosing of the default font.



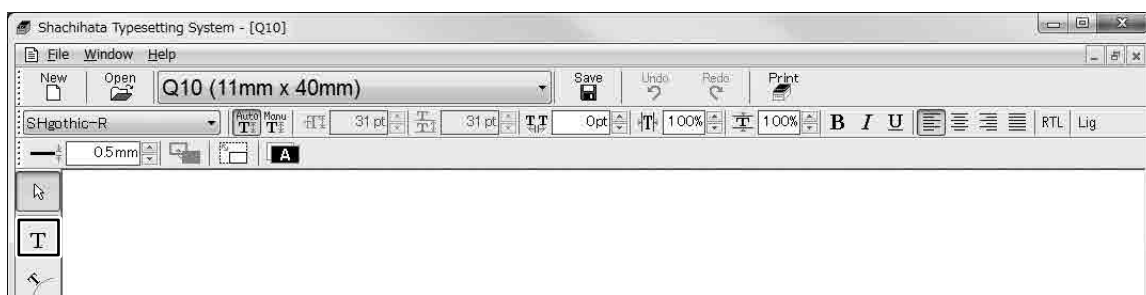
7 Typeset function

How to type the text (by using Auto Font Size Adjuster)

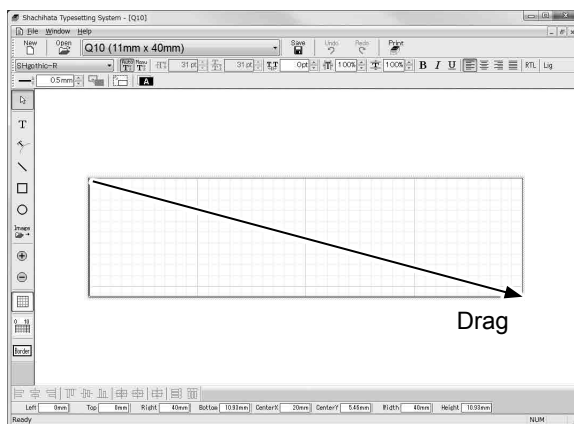
- 1 Click on  (Auto Font Size Adjuster Button) on the tool bar.



- 2 Then click on  button on the tool bar at left side.



- 3 Click and drag on the screen to creat a text box.



4 For English

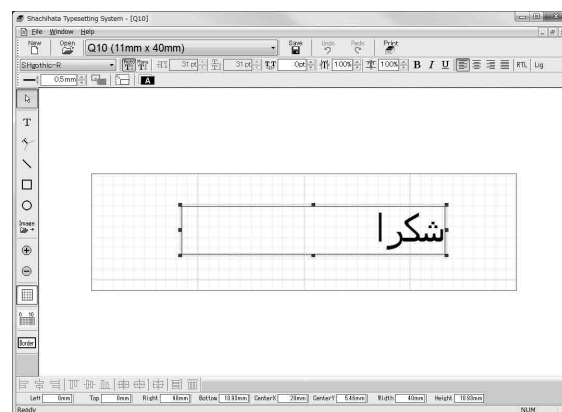
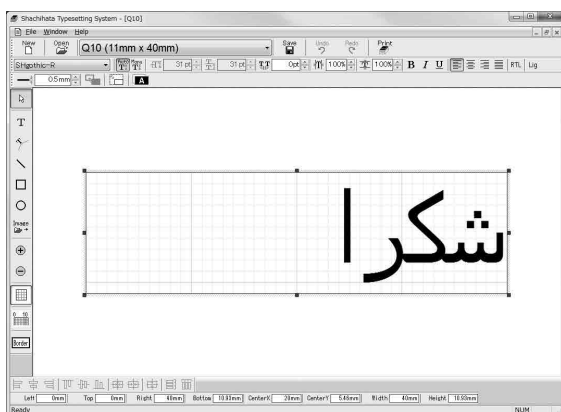
Type in the letters. The text will automatically adjust its font size to fit in the text box.



For other than English

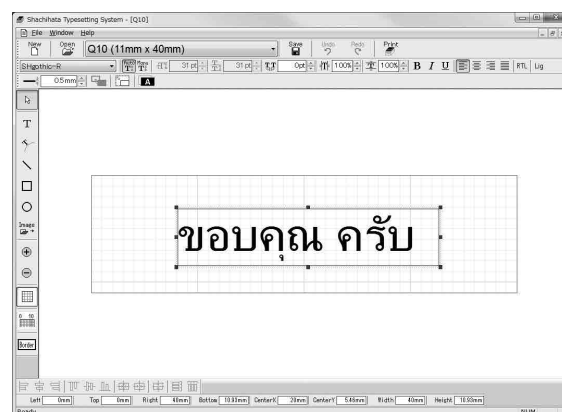
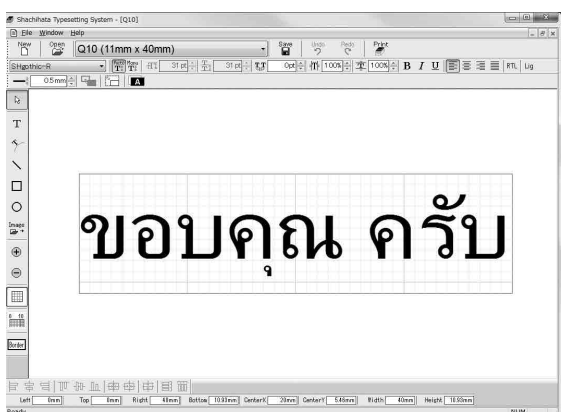
■ Right-to-Left language (for example, Arabic):

Click [RTL] (Right-to-Left) button, then type in the letters. The text will automatically adjust its font size to fit in the text box.



■ Ligature language (for example, Thailand):

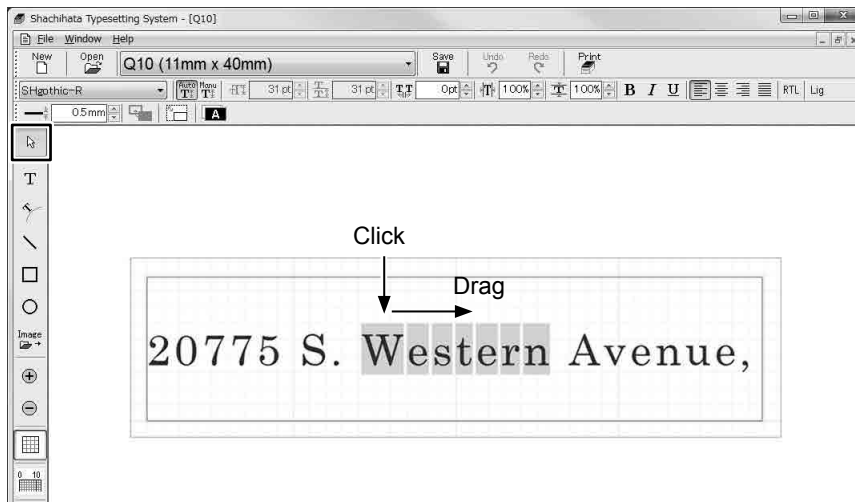
Click [Lig] (Ligature) button, then type in the letters. The text will automatically adjust its font size to fit in the text box.



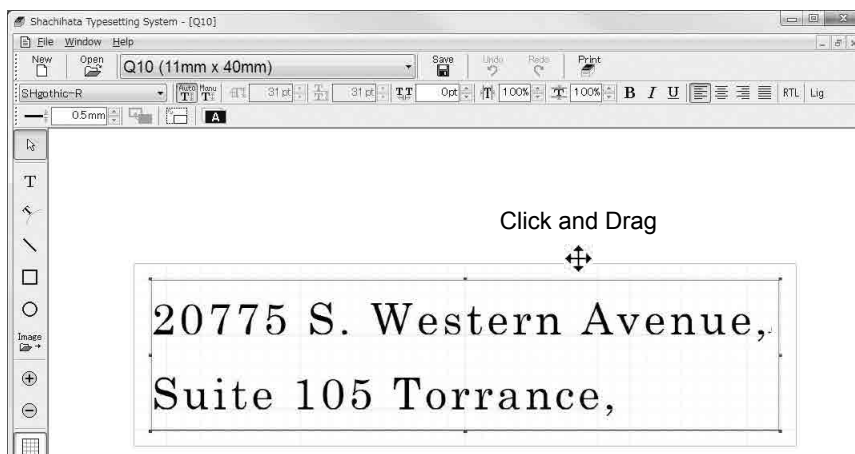
* The text that is less than 8pt is displayed in red as warning.

Please refer to p32 "How to type the text (by using Manual Font Size Adjuster )" for a countermeasure.

- 5** To select the letter / character unit, click on  button on the tool bar and then click and drag its character unit. Those selected letter can be deleted or the fonts can be changed.



- 6** To move the text, click and drag the upper side of text box.



How to type the text (by using Manual Font Size Adjuster)

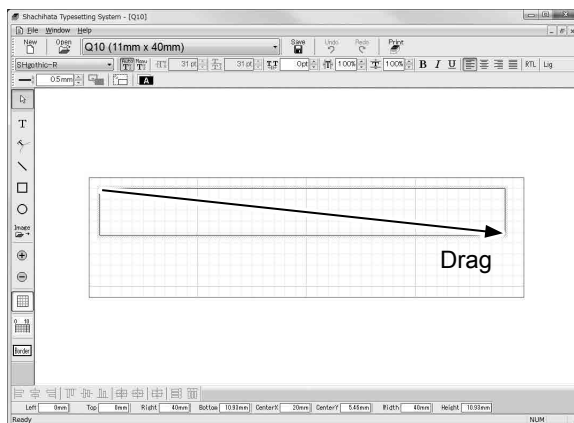
- 1 Click on  (Manual Font Size Adjuster Button) on the tool bar.



- 2 Then click the  button on the tool bar at the left side.

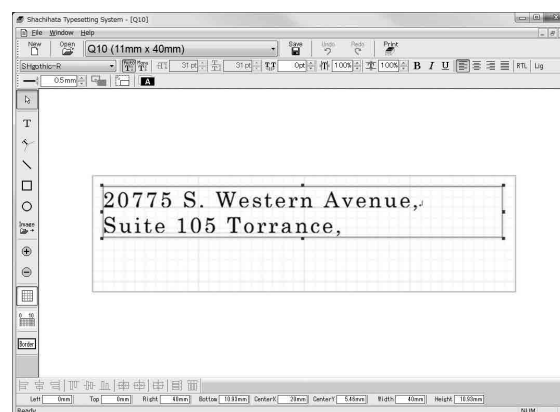
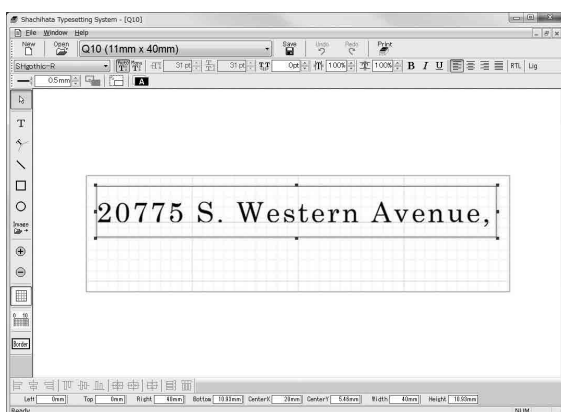


- 3 Click and drag on the screen to creat a text box.



4 For English

Type in the letters. It will automatically start the new line when there are too many letters.
New line can be also made by pressing the “enter” key.

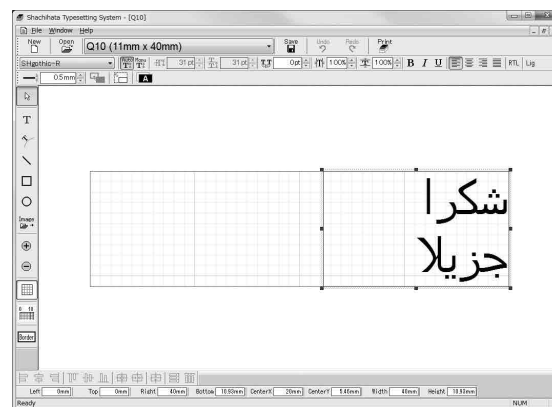


For other than English

■ Right-to-Left language (for example, Arabic):

Click [RTL] (Right-to-Left) button, then type in the letters. It will automatically start the new line when there are too many letters.

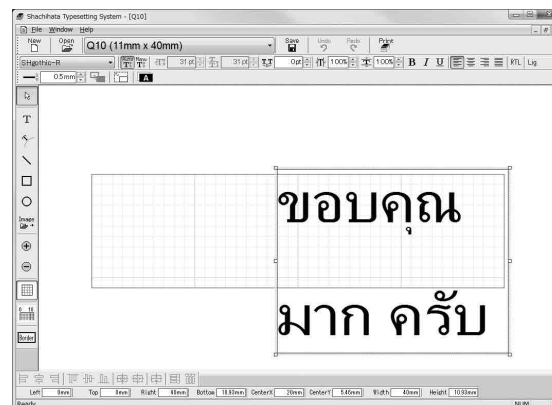
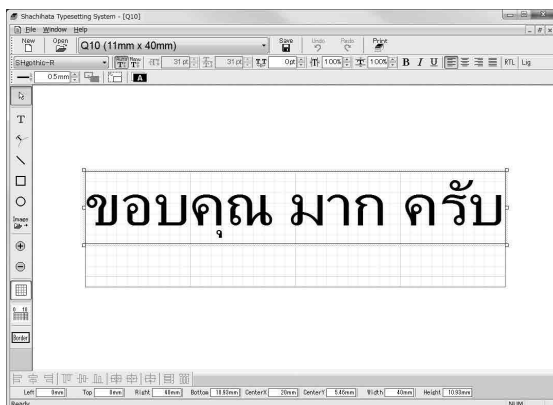
New line can be also made by pressing the “enter” key.



■ Ligature language (for example, Thailand):

Click [Lig] (Ligature) button, then type in the letters. It will automatically start the new line when there are too many letters.

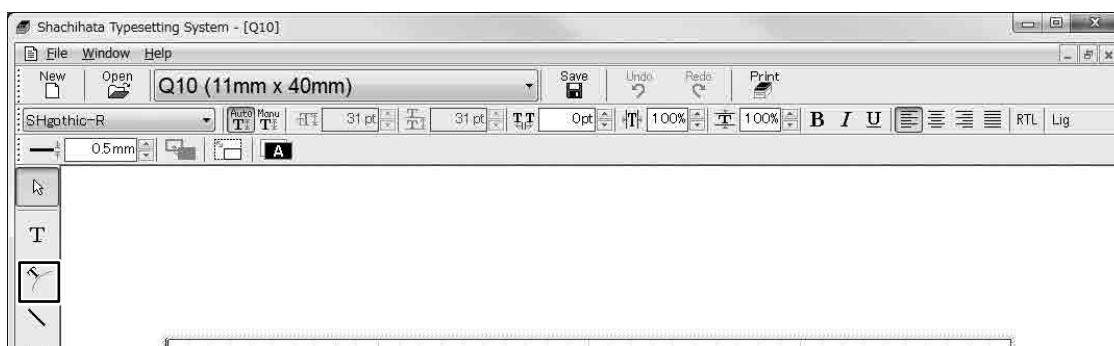
New line can be also made by pressing the “enter” key.



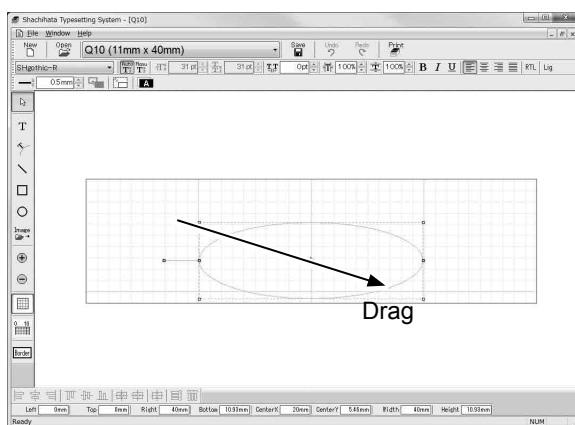
How to typeset curved type

- * This function is not compatible with Right-to-Left language (for example, Arabic) and Ligature language (for example, Thailand).

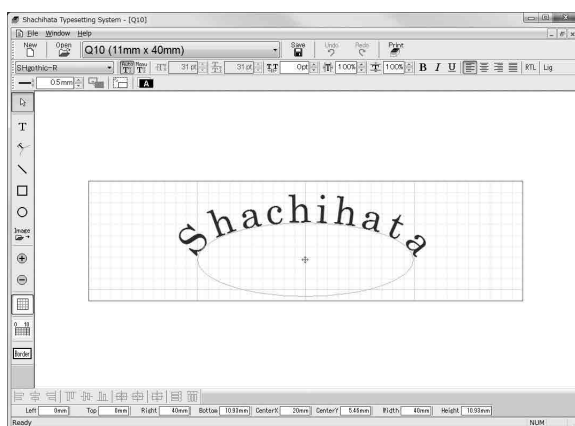
1 Click  button on the tool bar at left side.




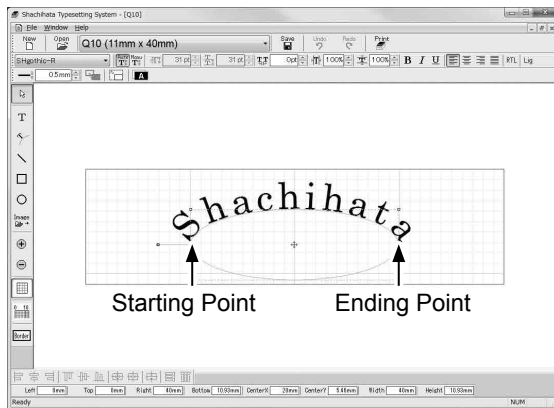
2 Click and drag to create a text box to draw a oval / circular shape.



3 Type in the letters.

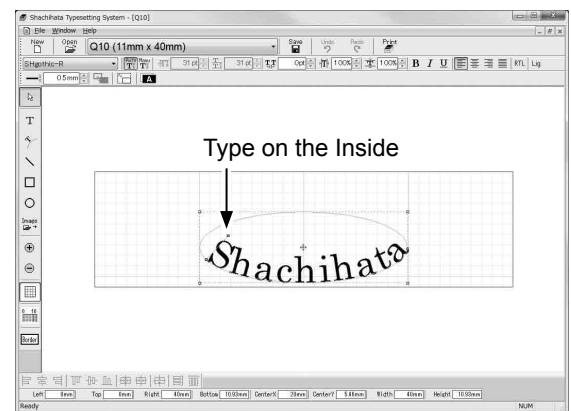
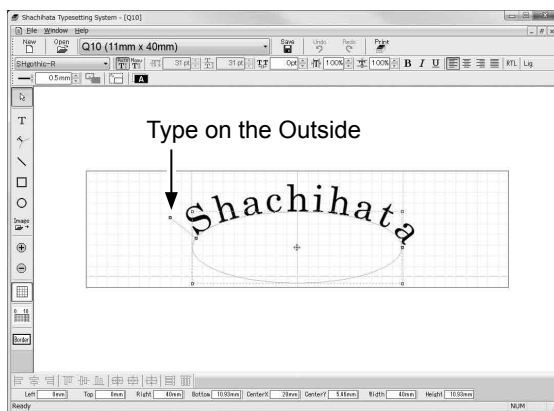


- 4** Click  button on the tool bar at left side. Then click and drag the starting point and / or the ending point of the base shape of the text line.

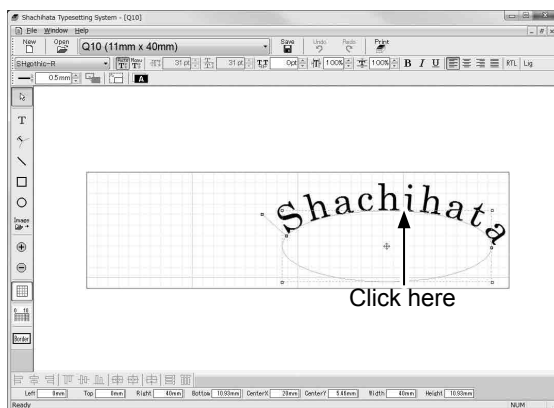


Can be changed by dragging.

You can also change which side of the oval / circle you want to write on, by clicking on either inside or outside.

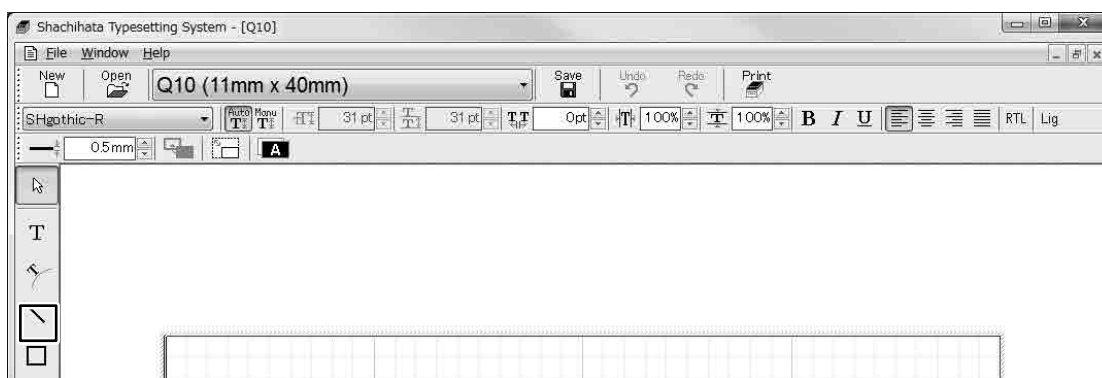


- 5** Click and drag the center of the oval / circle to relocate the text.

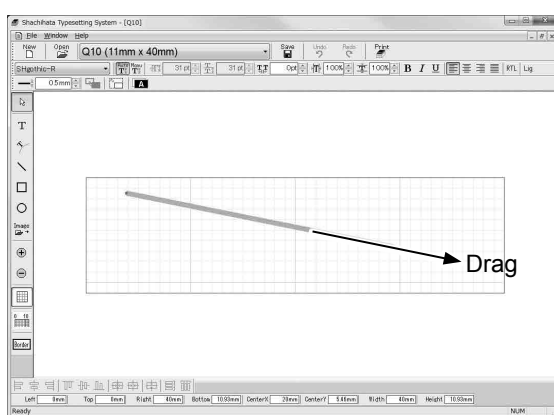


How to draw a straight line

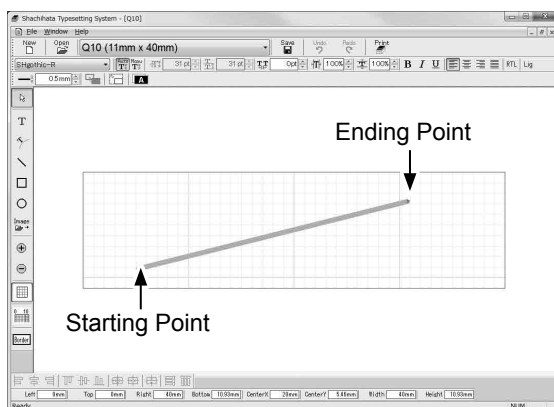
- 1 Click  button on the tool bar at left side.



- 2 Then click and drag to draw a straight line.

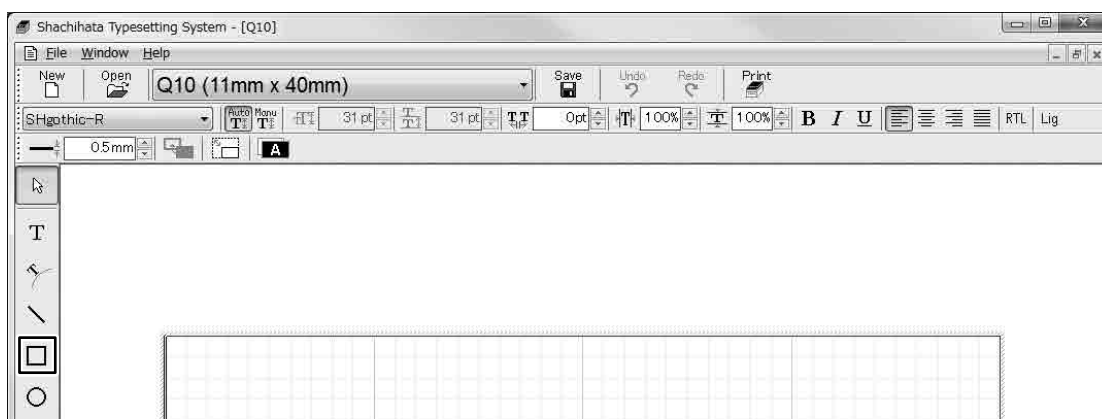


- 3 Click and drag either point to change the starting point and ending point.

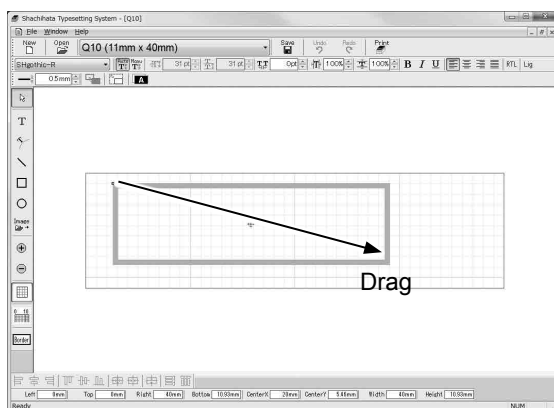


How to draw rectangle

- 1 Click  button on the tool bar at left side.



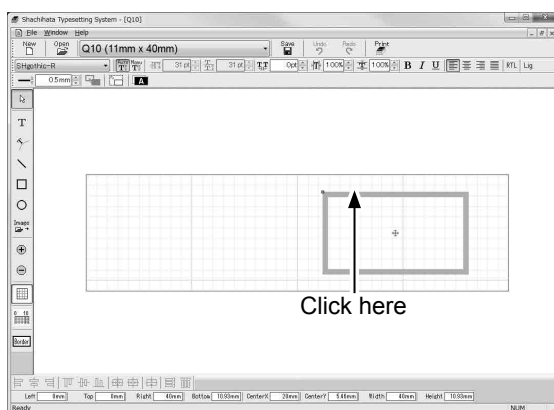
- 2 Click and drag to make a rectangular shape.



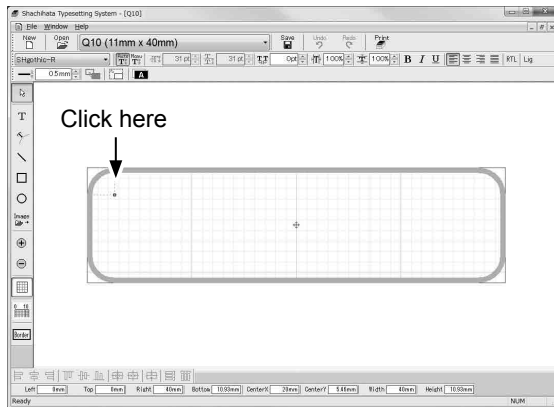
Hold the "Shift" key while dragging to draw a shape whose height and width are equal.

Hold the "Ctrl" key while dragging to draw a shape with the center fixed.

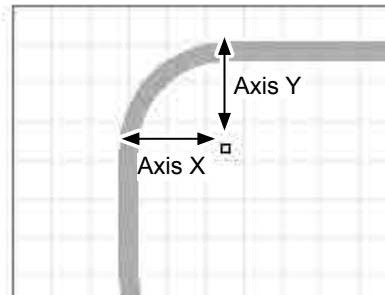
- 3 Click and drag any one of four sides or corners to change the size of the rectangle. Click and drag the center of the rectangle to relocate the text.



- 4** Click the point in green shown at the top left corner of the rectangle and drag it as you like to make the rounded corner as shown on the image below.

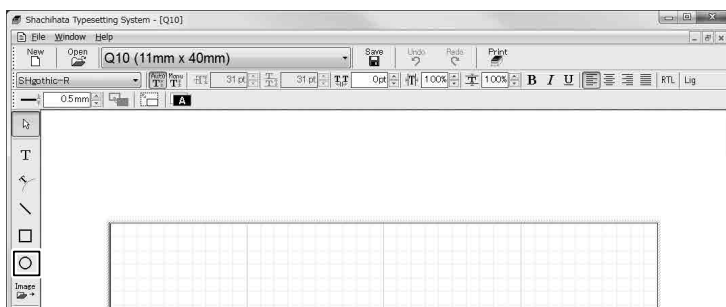


Axis Y and X will be same length, when dragging the green point while pressing the “shift” key.

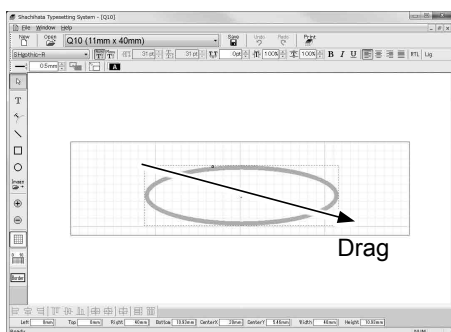


How to draw a oval / circle

- 1 Click  button on the tool bar at left side.

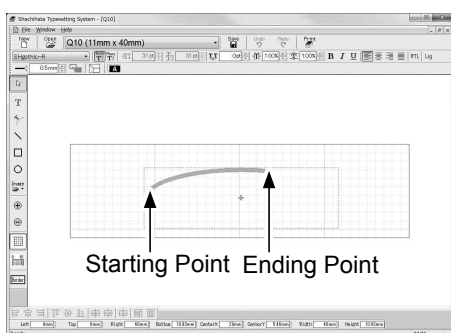


- 2 Click and drag to create a text box to draw a oval / circular shape.



Hold the "Shift" key while dragging to draw a shape whose height and width are equal.
Hold the "Ctrl" key while dragging to draw a shape with the center fixed.

- 3 To make circular arc, drag and move the starting point and ending point.



Monochrome inversion

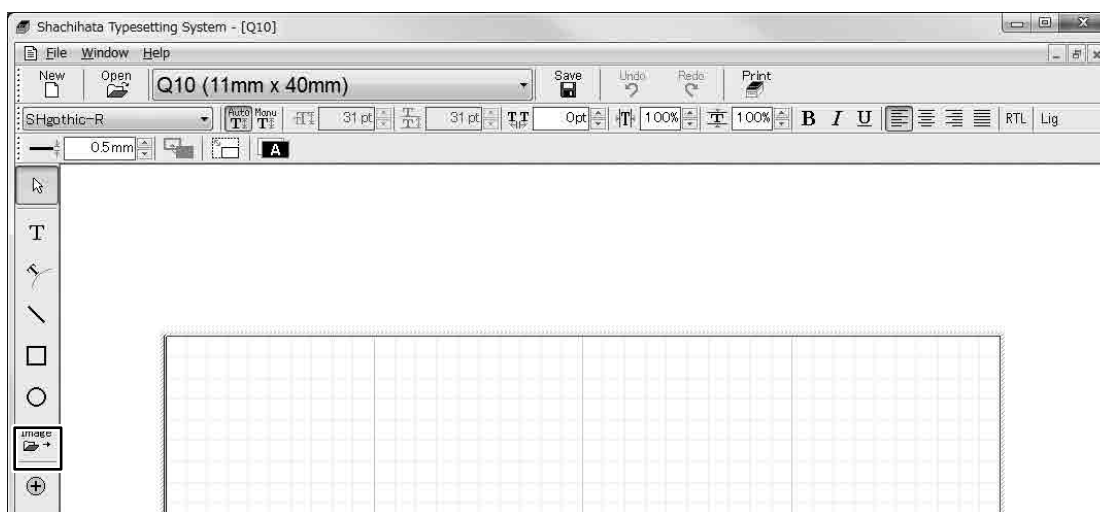
- 1 Select a text box.
- 2 Click the [Monochrome inversion] button.



* Since the letter color turn in white, put some black shapes in advance.

Adding a Graphic

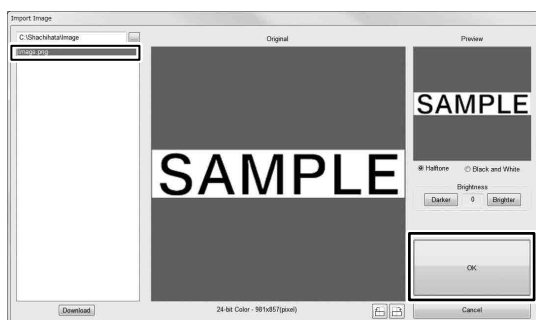
- 1 Click  button on the tool bar at left side.



- 2 Select the graphic.

[For monochrome image]

Select the file and click [OK] button.



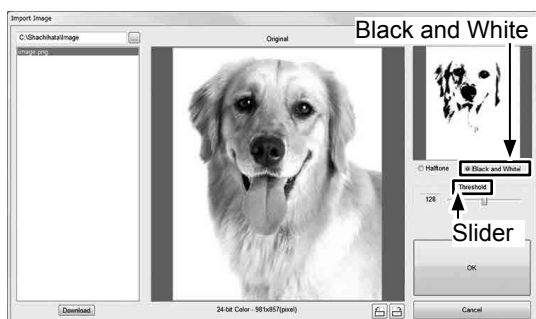
Type of file format that can be imported

- Tiff, Bmp, Jpeg, Png

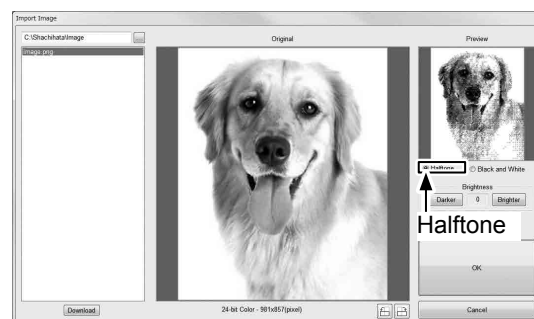
[For grayscale or color images]

After selecting the file then refer to the preview and select halftone or Black and White then click [OK].

- * By using threshold slider, you can adjust the Black and White image.



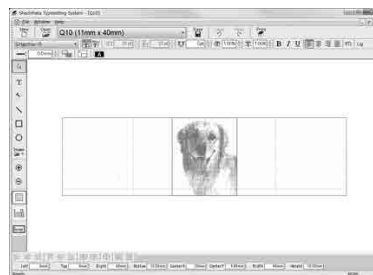
- * You can adjust the Halftone by using Brightness button.



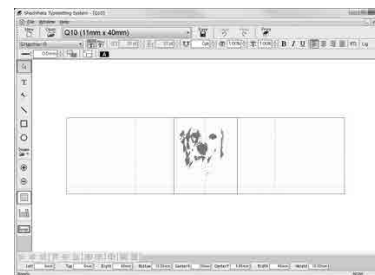
3 Graphic will appear in the template.



Monochrome image



Halftone



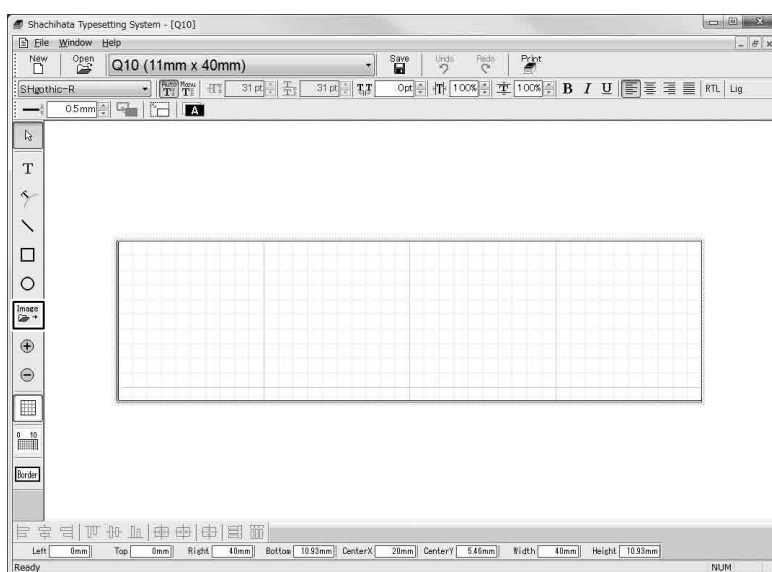
Black and White

Reference: How to download photos from "QuiX Studio"

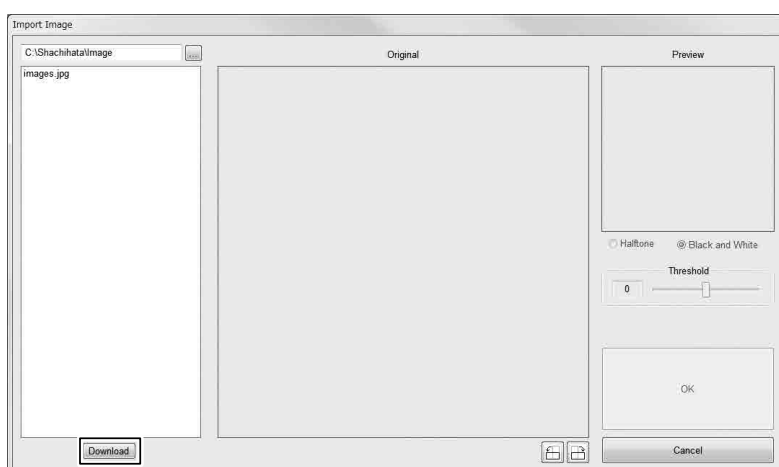
An Internet access is required for "QuiX Studio" services.

* It may not be available in some areas since it accesses the Japan server.

1 Click the [Image] button.



2 Click the [Download] button.

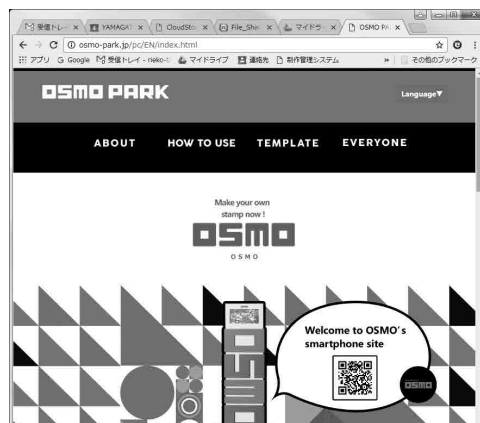


3 Input a Receipt Number sent from "QuiX Studio".

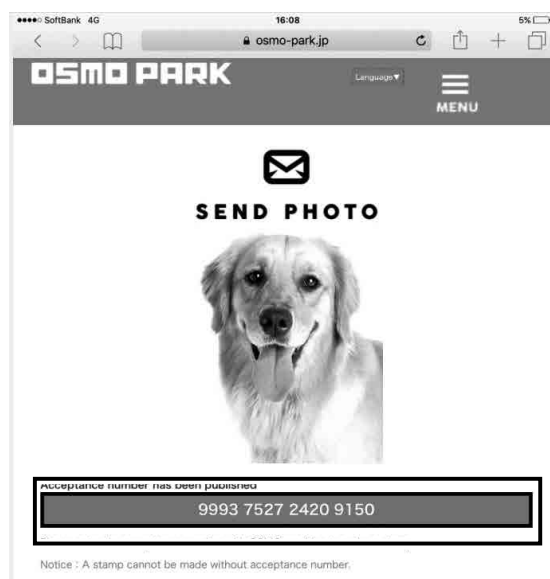
Please refer to the following URL or QR code for operation of "QuiX Studio".

1. Access the "QuiX Studio" (OSMO PARK) website by smartphone.

<http://osmo-park.jp/quixstudio/>



2. Choose your language
3. Click [Send a photo now].
4. SELECT to choose a photo.
5. Chose a photo.
6. Click [UPLOAD]
7. Get a Receipt Number.



- * Website homepage is subject to change without prior notice.

4 Click the [OK] button to download the photo data from "QuiX Studio".

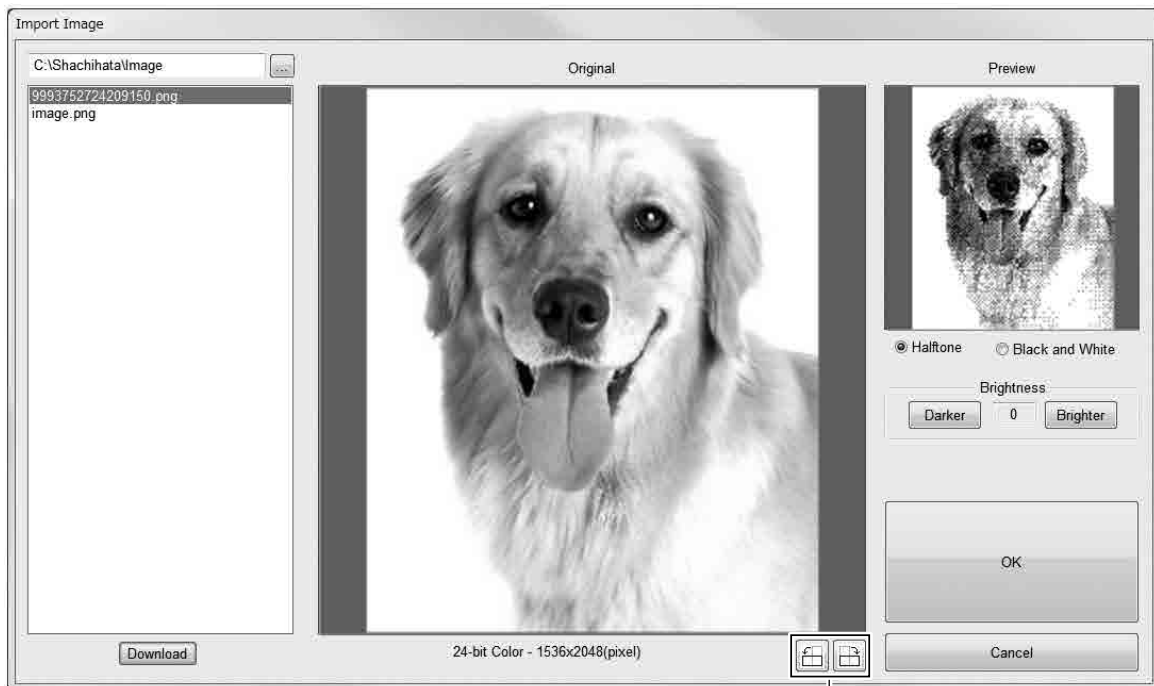
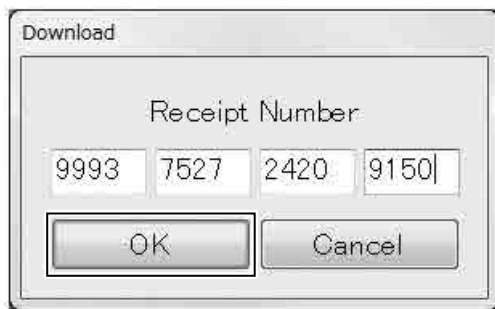
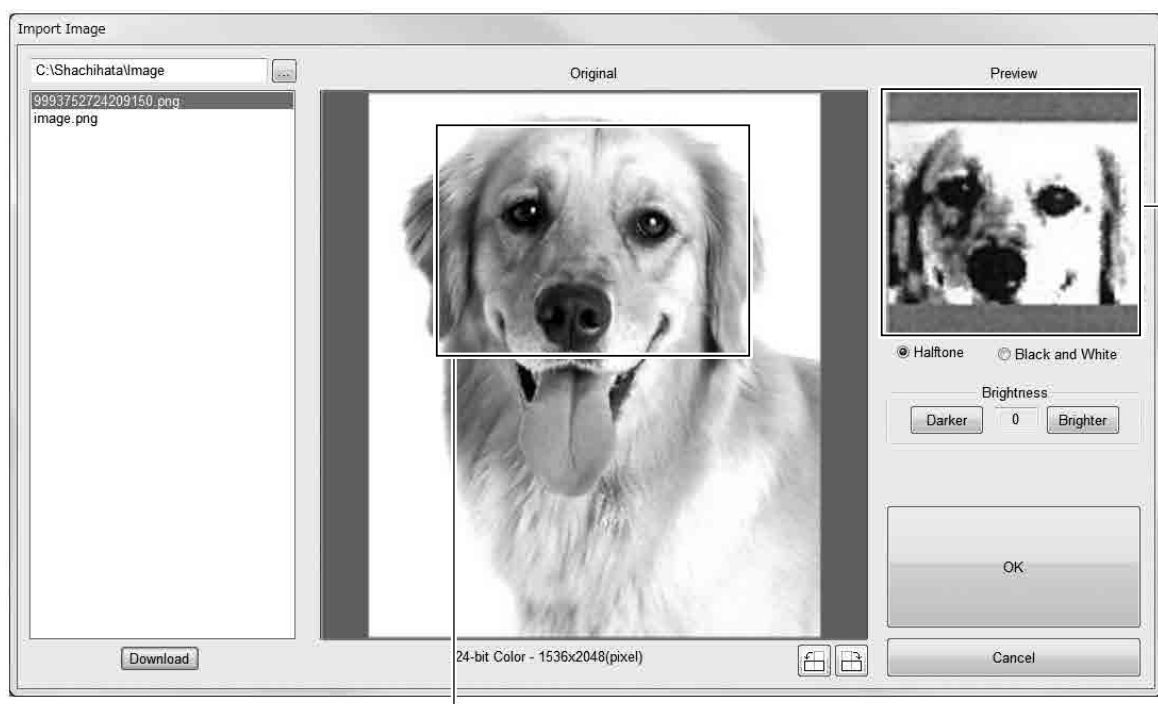


Image rotate button
An image can be rotated in 90-degree increments.

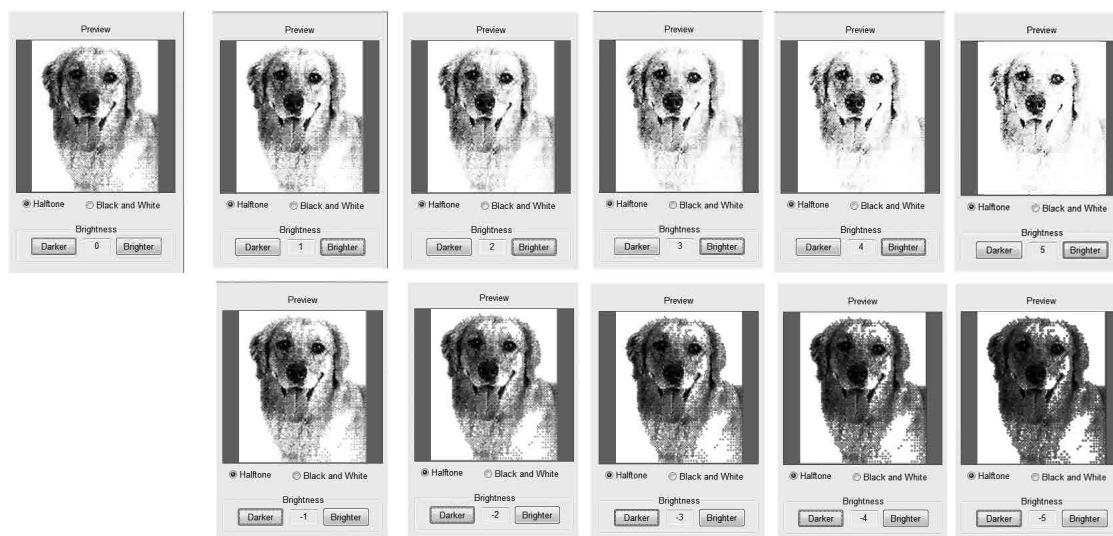
5 Define the trimming area and brightness.



Trimming area
Define the area by dragging the four sides.

The trimmed area will appear on the
Preview screen.

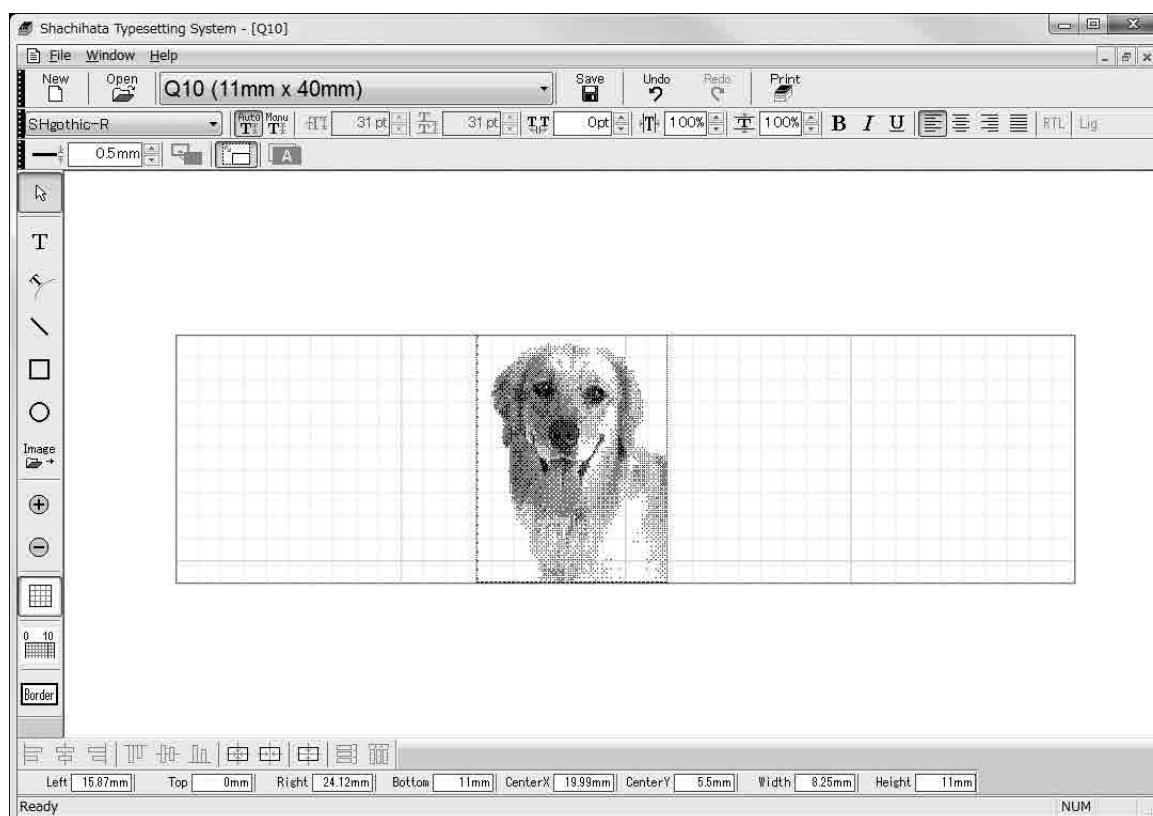
* Brightness is adjustable in ± 5 levels.



Brighter

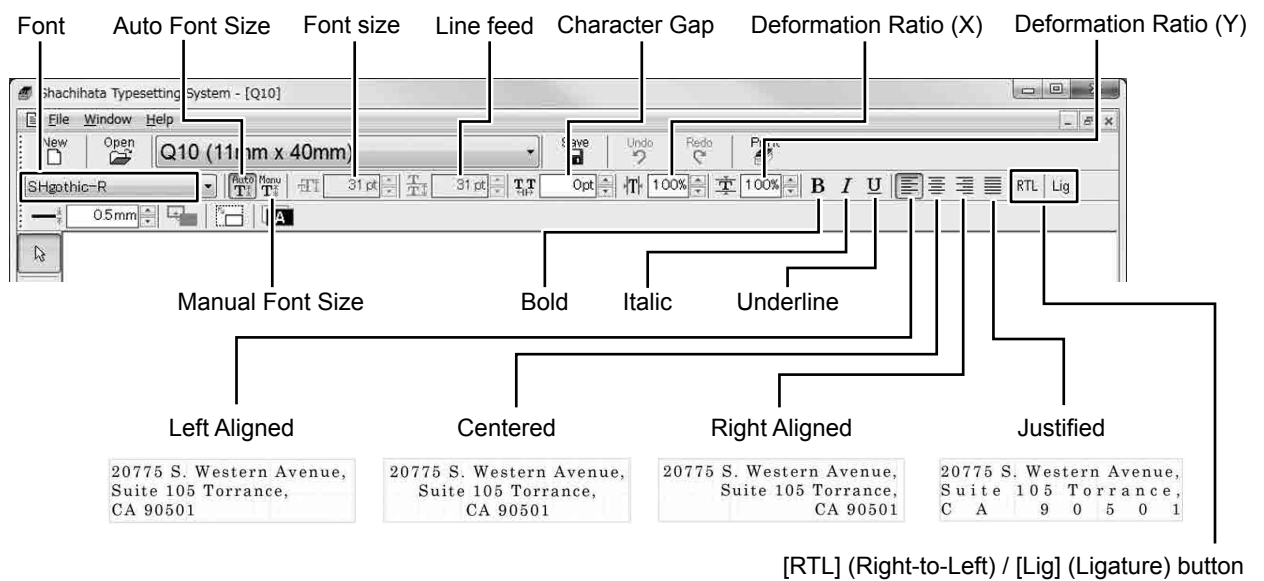
Darker

6 Click the [OK] button to import the image.



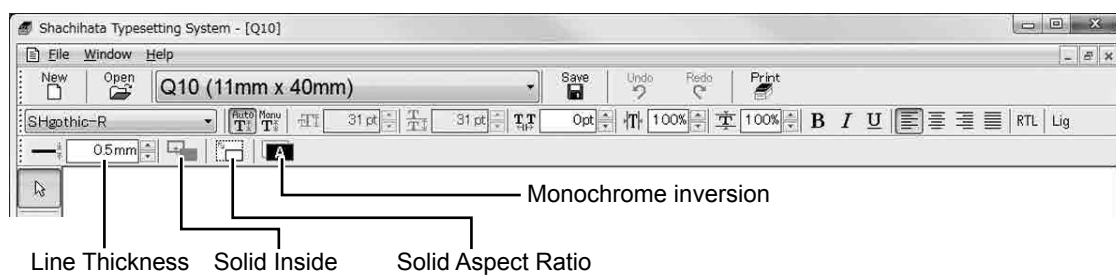
Descriptions of the Icons on Tool Bar

Icons used for Text

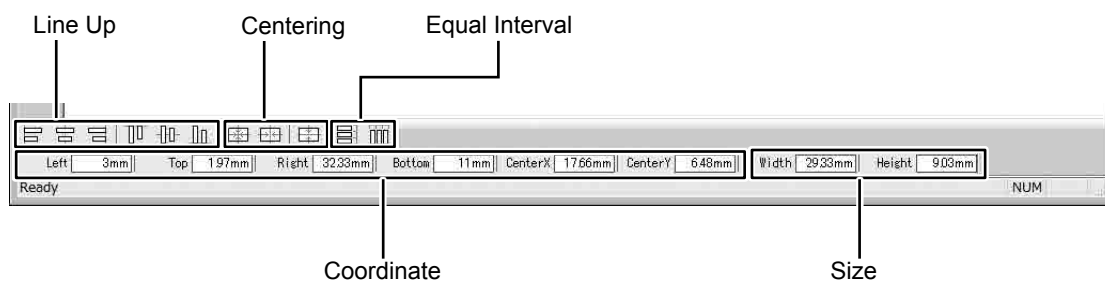


شکرا /ขอบคุณ ครับ

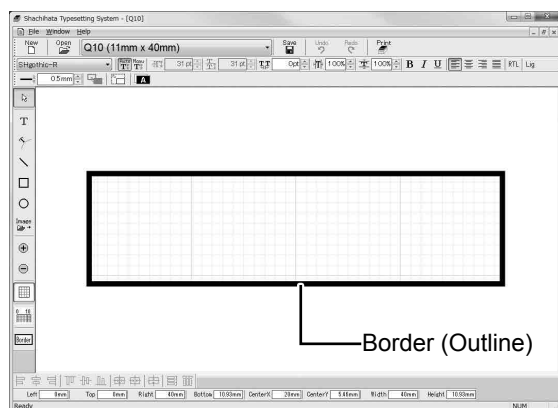
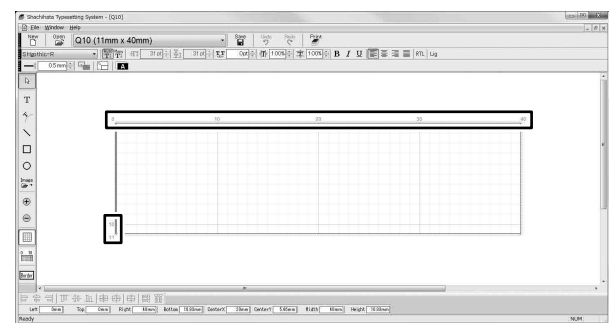
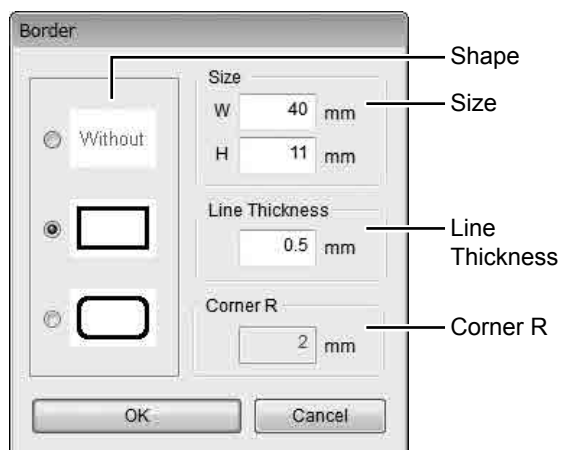
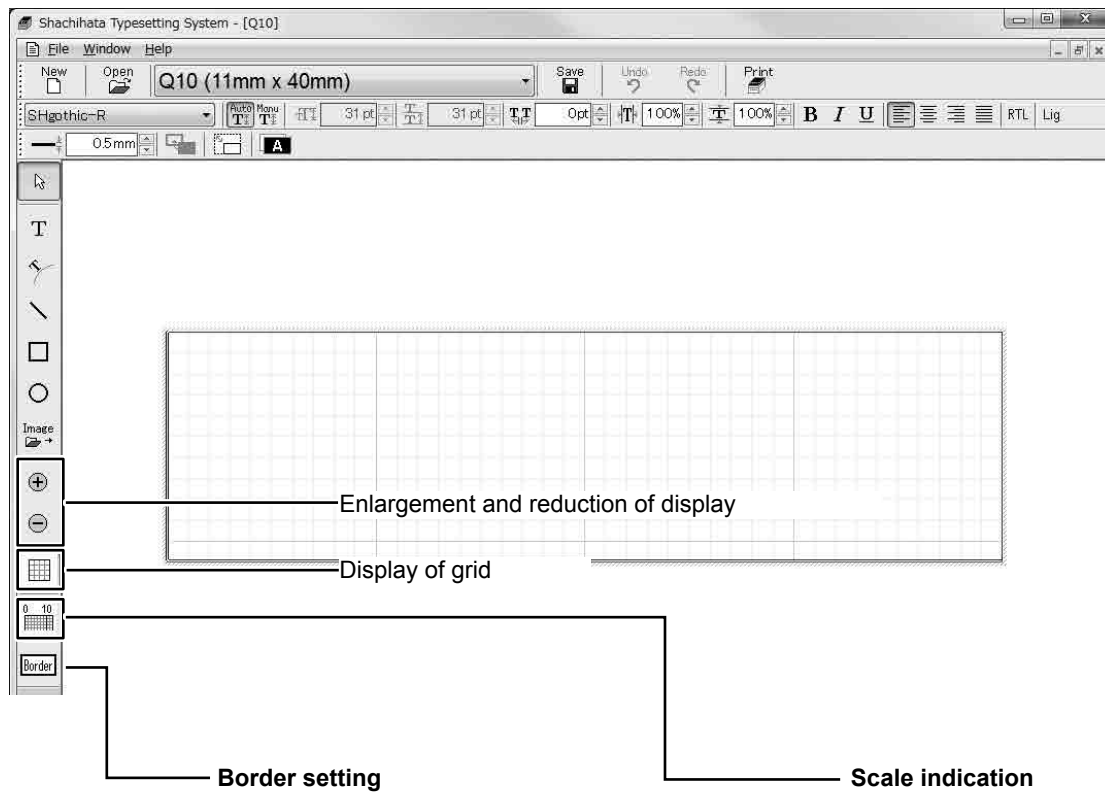
Icons used for Shapes and Pictures



Icons used for Alignments and Coordination

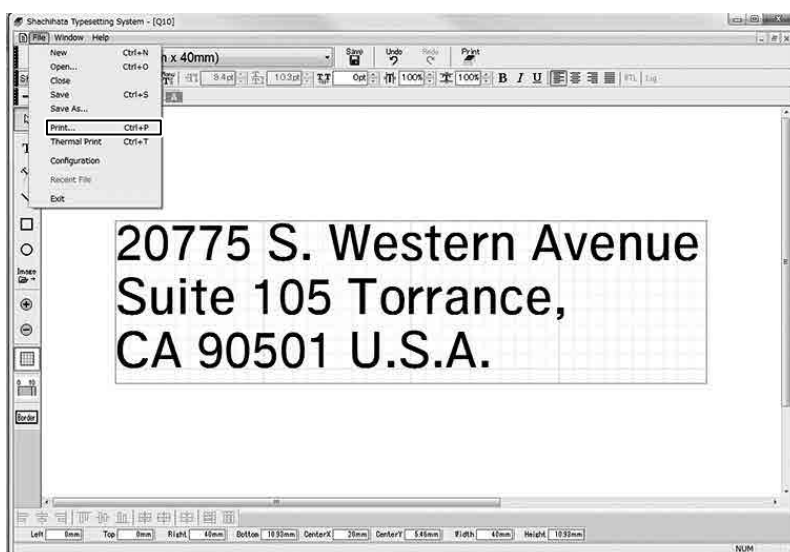


Icon used for display and outline

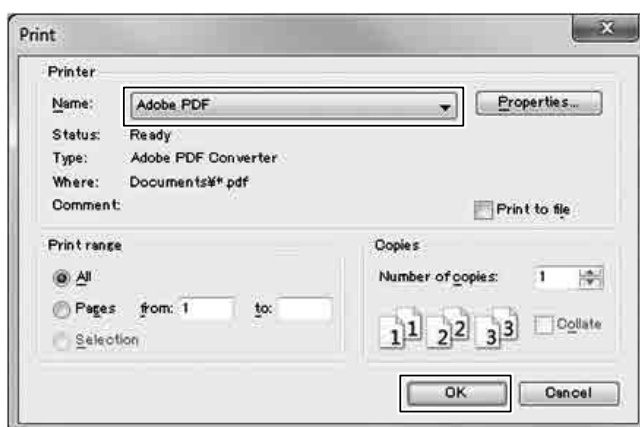


How to print proof

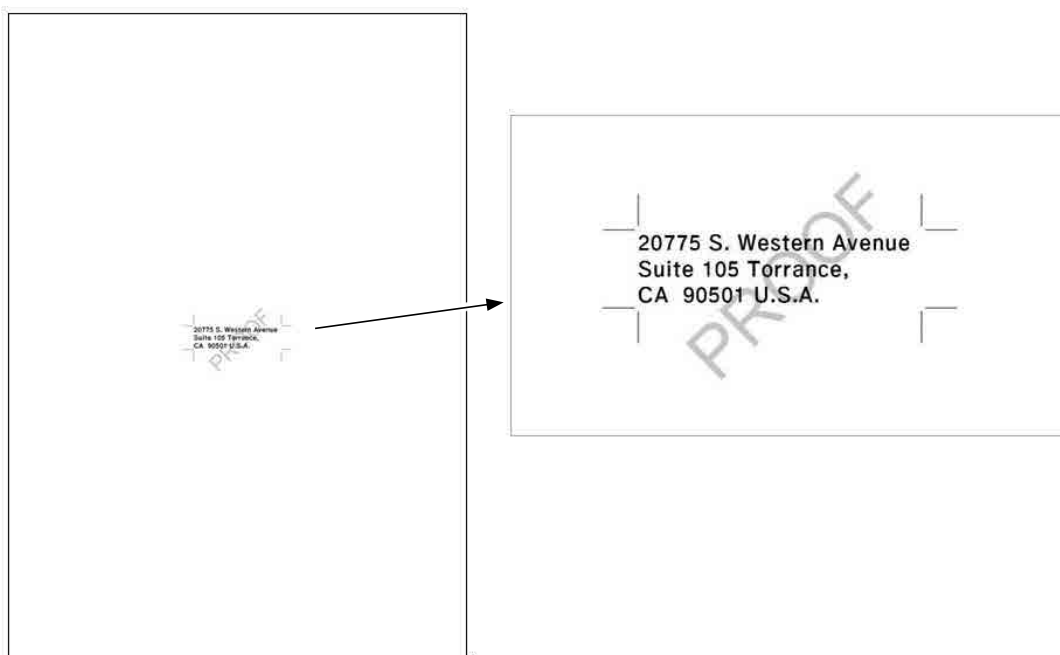
- 1 Click on [Print] from the [File] menu.



- 2 Click on [OK] to start printing.

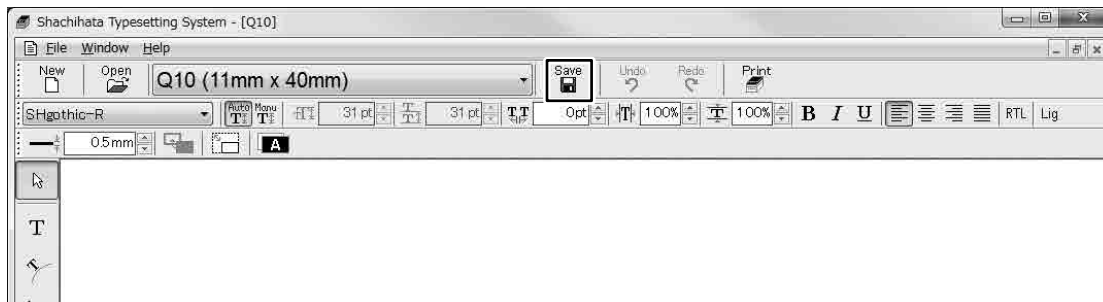


* "PROOF" will be printed in the back ground.

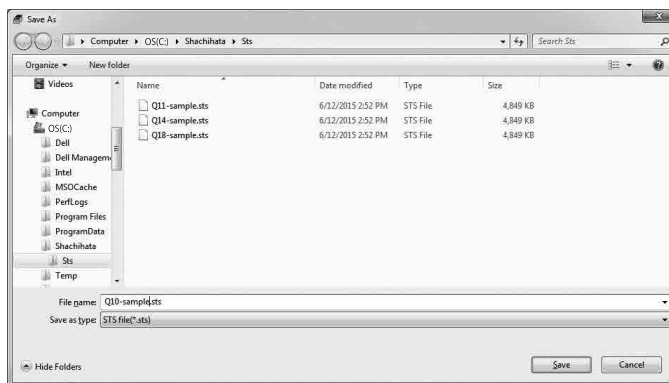


How to save

- 1 Click  button on the tool bar.

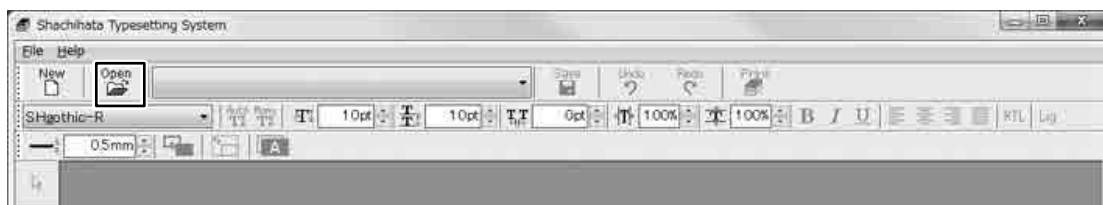


- 2 Type in the file name and click on the [save] button.

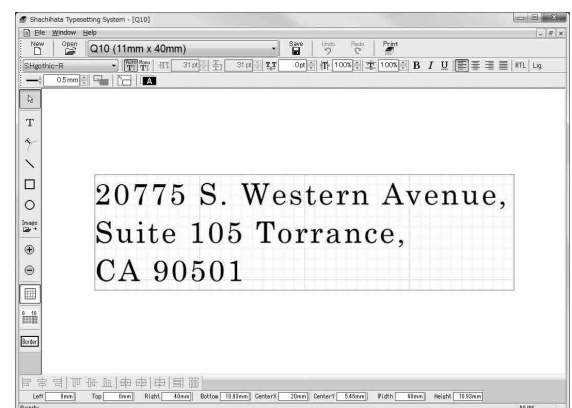
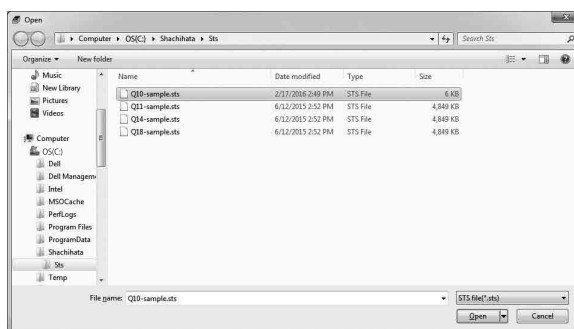


How to open a previously saved file

- 1 Click  button on the tool tab.

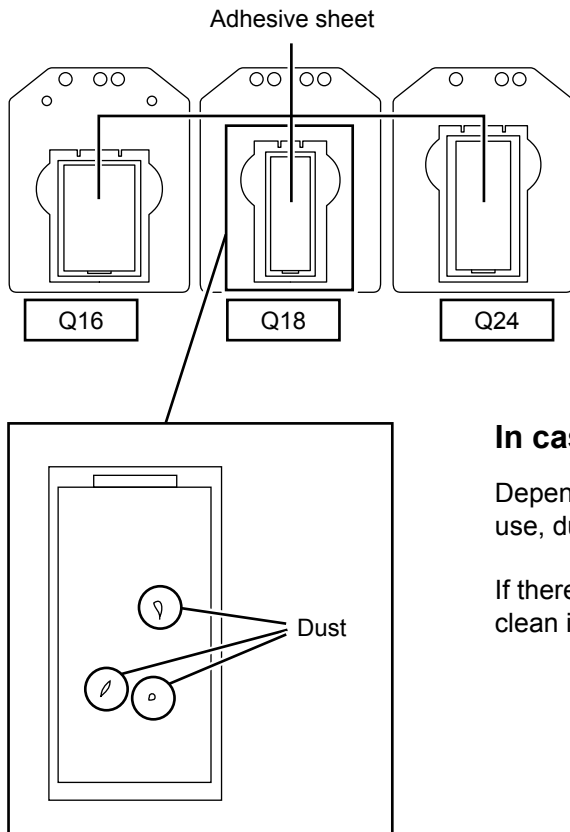


- 2 Choose the file and click on the [open] button.



8 How to clean the Cartridges (Q16/Q18/Q24)

The cartridges of Q16, Q18, and Q24 have an adhesive sheet on the platform of Impression Die. Please keep clean in the following way as dust may weaken the adhesiveness and it may cause printing failure.



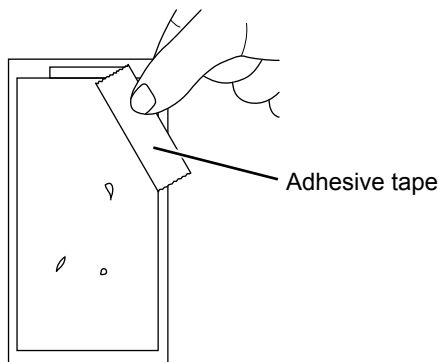
In case there is dust on the sheet

Depending on the storage method, indoor environment, and times of use, dust may get attached and cause defects in printing.

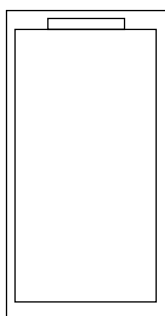
If there is dust in the position where an Impression Die is loaded into, clean it in the following way.

How to clean

1 Remove dust with adhesive tape.

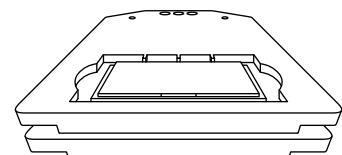


2 Make sure that there is no dust on the sheet and load Impression Die into the cartridge.



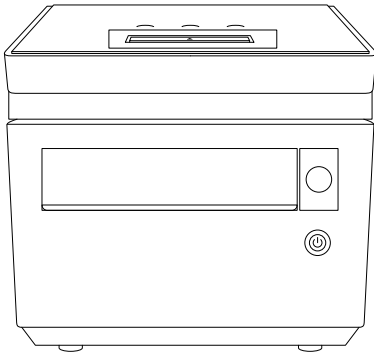
Reference: Preferred Storing

Stack the cartridges of Q16, Q18, and Q24 on lower layers to keep away from dust.

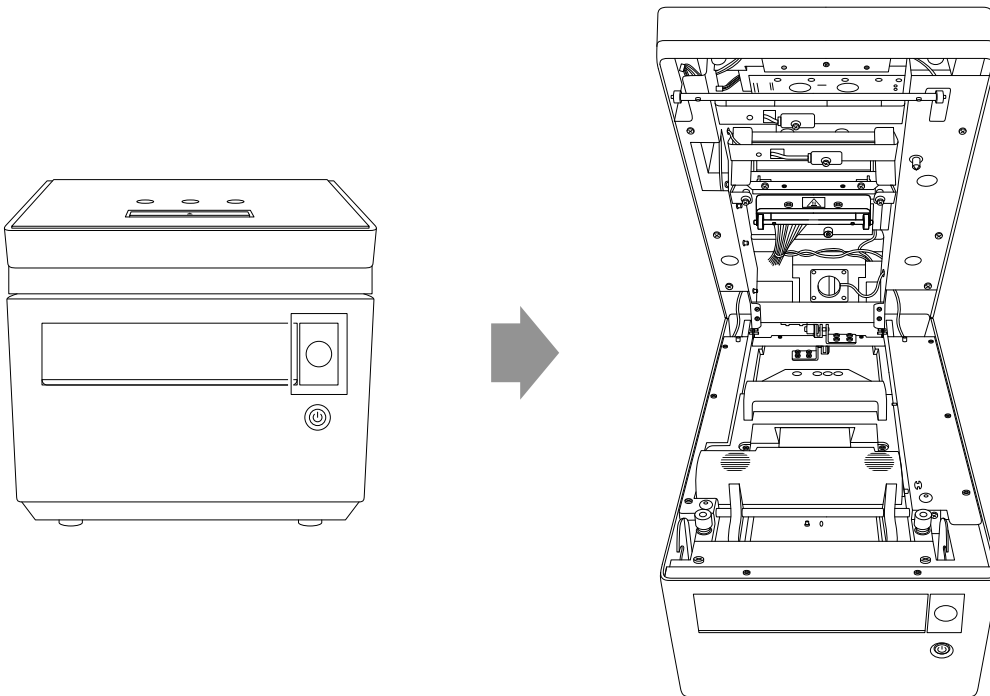


9 How to change the Ribbon Cartridge

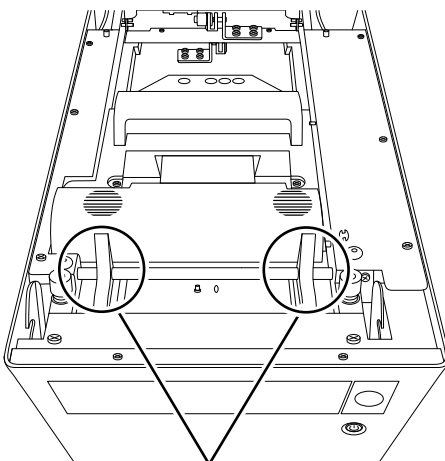
- 1** If Tray is ejected, push ▲ Button to load the Tray and then turn off the power.



- 2** Push the button to open cover to release the lock and then the cover will rise a little. Lift and open the cover until the cover stops.

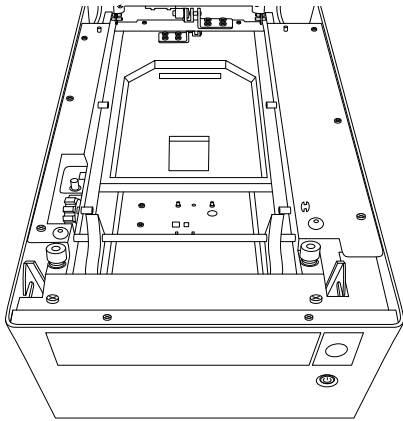


- 3** Pull the lever to release the Ribbon Cartridge to unlock. Then Ribbon Cartridge will rise.

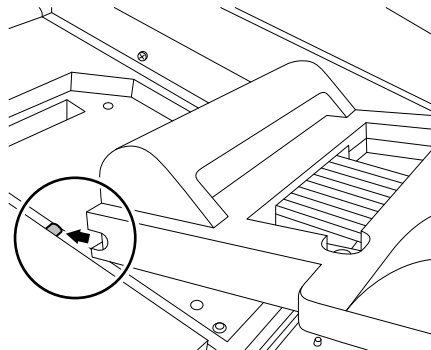
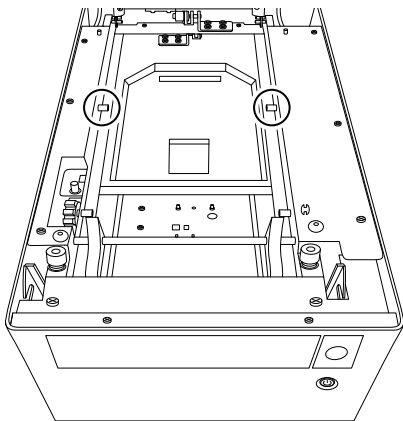


Lever to release the
Ribbon Cartridge

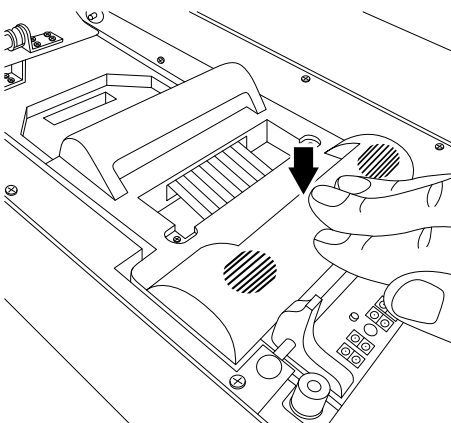
4 Take out the Ribbon Cartridge.



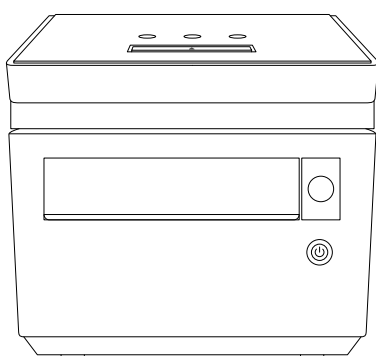
5 Set the hollow of the new Ribbon Cartridge with the projection of the device.



6 Push the Ribbon Cartridge until it clicks and locks.

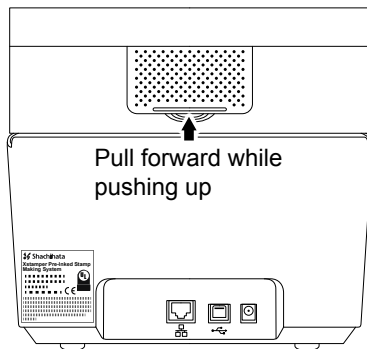


7 Close the cover.

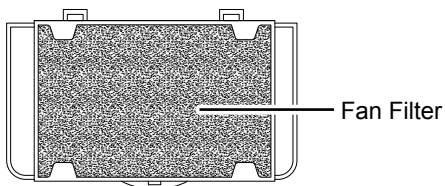


10 How to change the Fan Filter

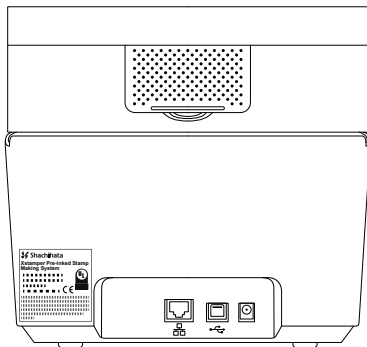
- 1** Take off the filter cover on the back of the Xstamper Pre-Inked Stamp Making System.



- 2** Take off the Fan Filter from the filter cover and change it to new Fan Filter.



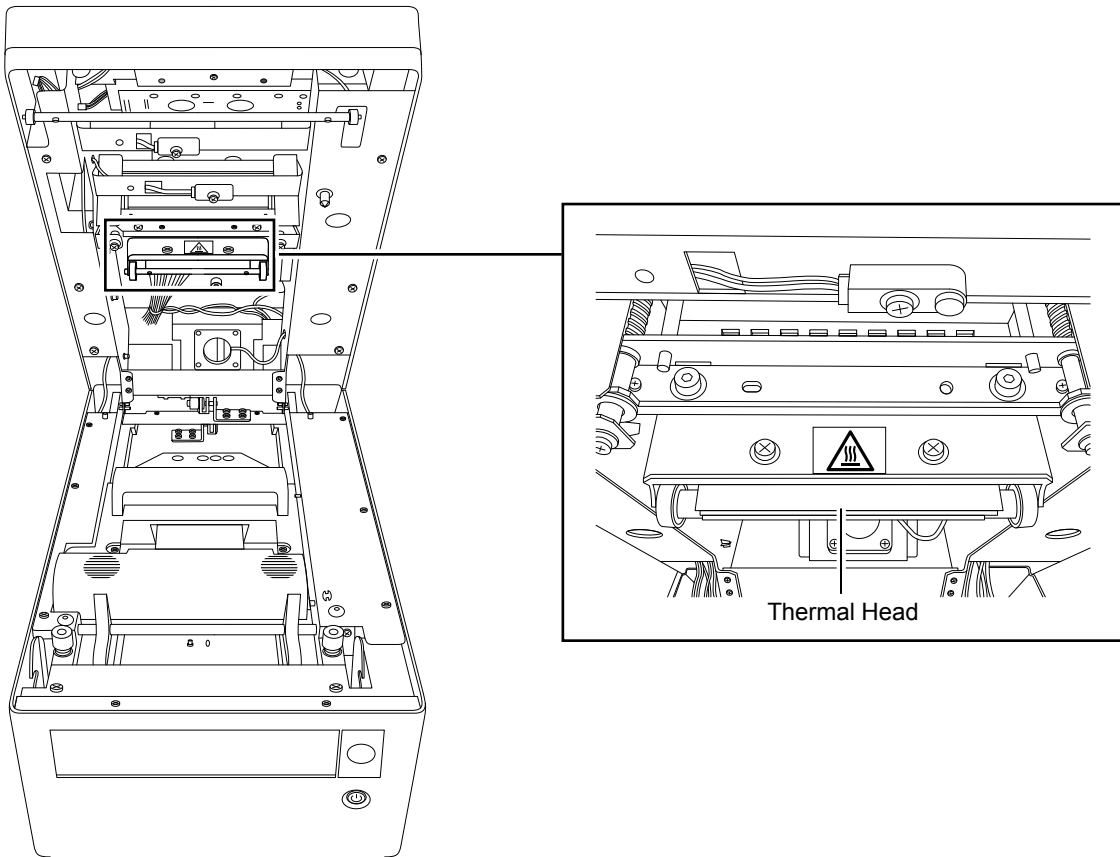
- 3** Put the filter cover back to the original place.



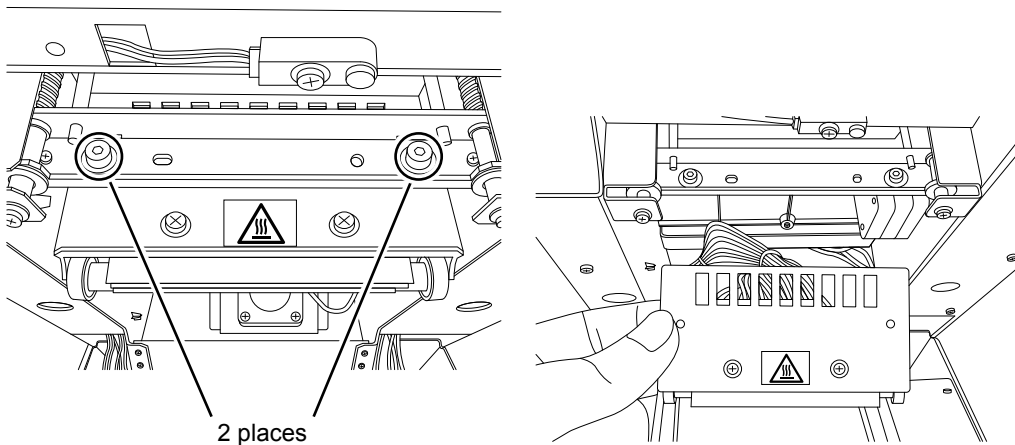
11 How to change the Thermal Head

- ⚠ Thermal Head may be HOT right after the device has been used.
Turn off the power and wait for 10 min. to start this operation.
- ⚠ Hold the Thermal Head cover when changing the Thermal Head. (Do not touch Thermal Head)

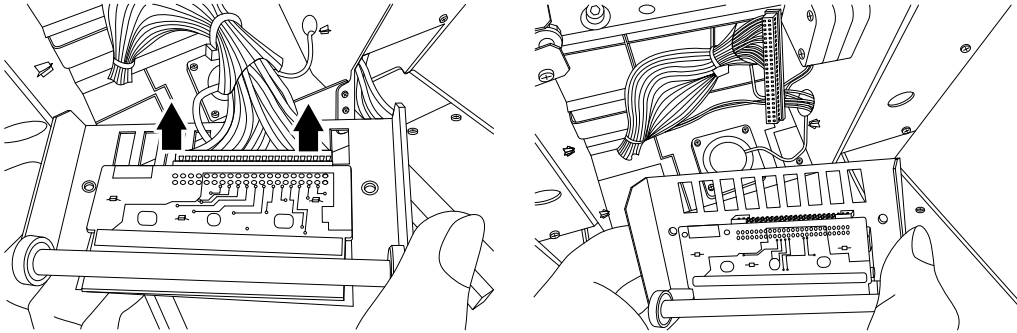
1 Open the cover.



2 Loosen the hex CAP screw by hexagonal wrench (2.5 mm) and remove the Thermal Head.

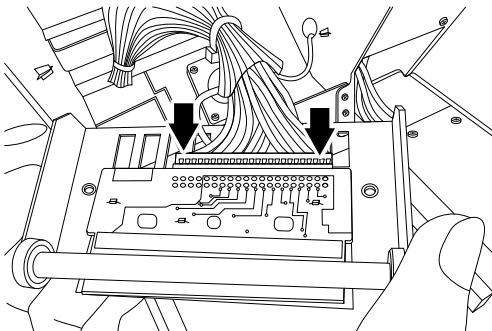


3 Disconnect the connector and detach the Thermal Head.

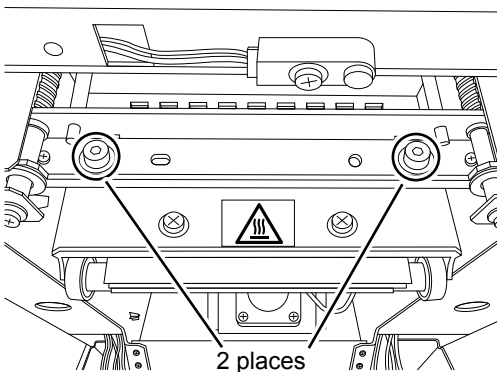


4 Put the new Thermal Head to the connector.

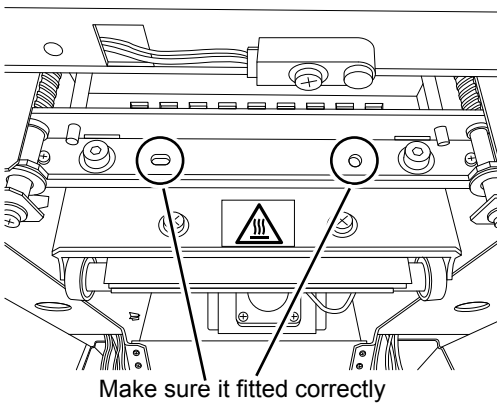
* Pay attention to the direction of the connector and insert all the way.



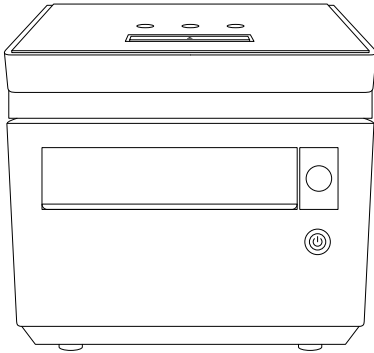
5 Temporarily fix the Thermal Head with hex CAP screw.



6 Make sure that boss fitted correctly and then tighten the screw.



7 Close the cover.



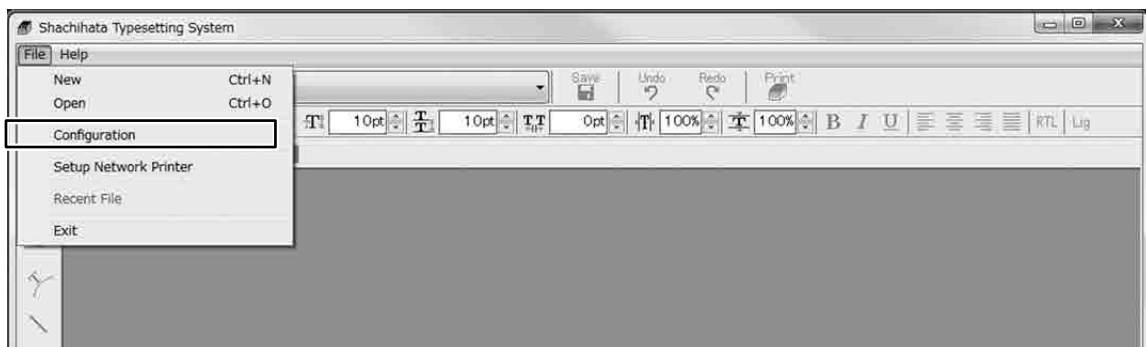
* Resistance value recorded in the *Xstamper Pre-Inked Stamp Making System* needs to be changed when the Thermal Head has been changed.

8 Turn the power on the Xstamper Pre-Inked Stamp Making System and connect to the PC with USB cable.

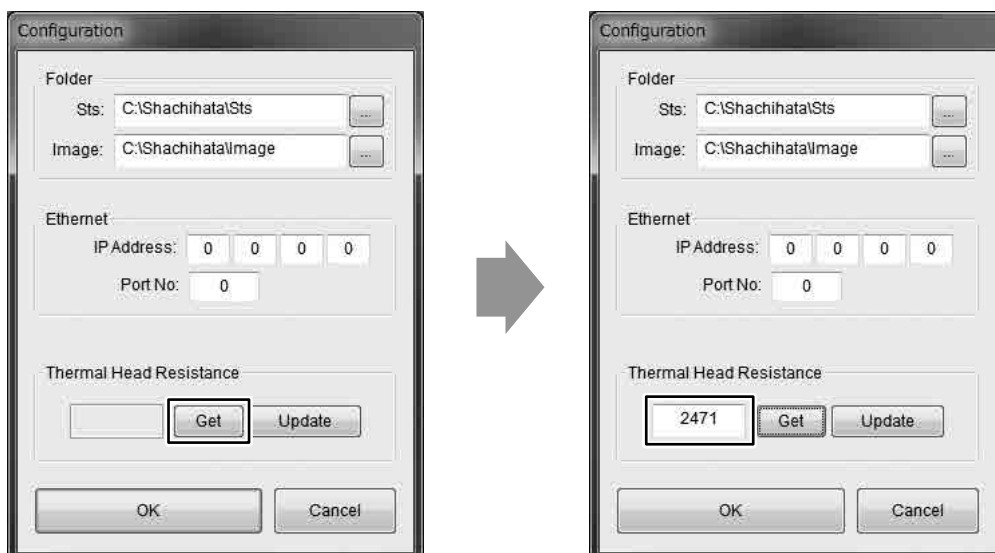
9 Double click Shachihata Typesetting System icon.

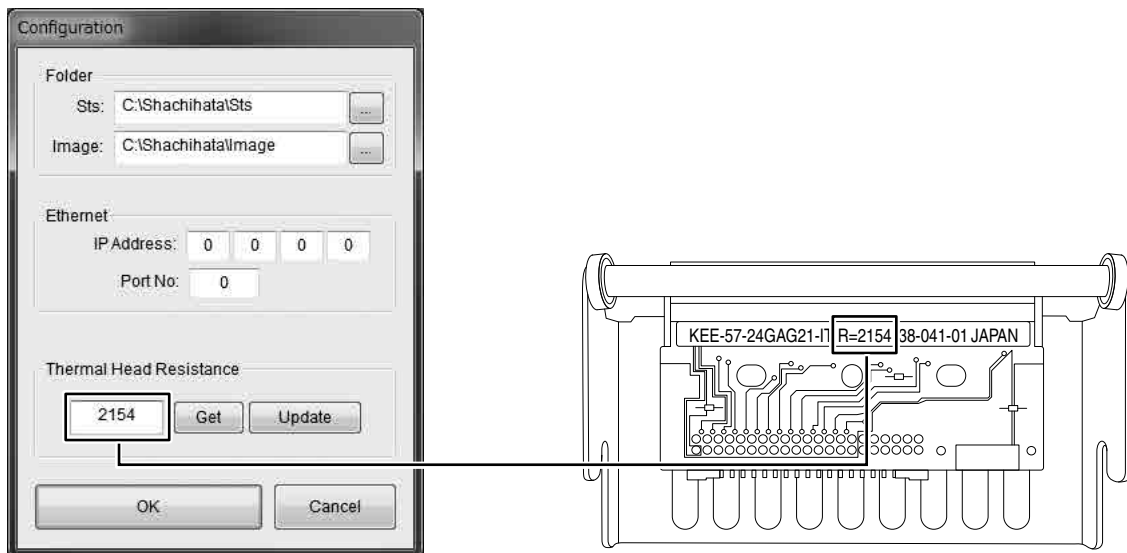
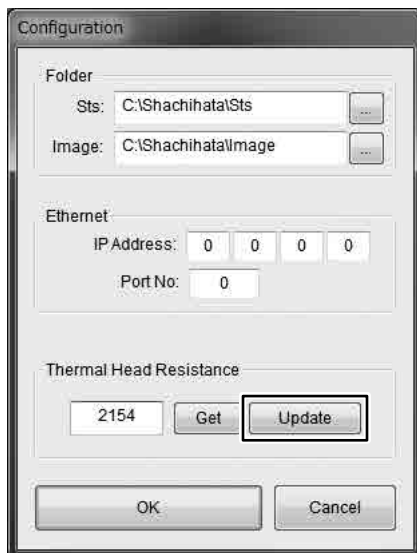


10 Click on [Configuration] from [File] menu.



11 Click on [Get] button from [Thermal Head Resistance]. Current value setting will appear on the screen.



12 Enter the resistance value written on the Thermal Head.**13 Click on [Update] button.****14 Click on [OK] button to close.**

12 Error Messages

When Error occurs, Error information will be displayed on the LCD and ERROR LED light will be on.
Refer to the Table 11 "List of Error" for recovery.

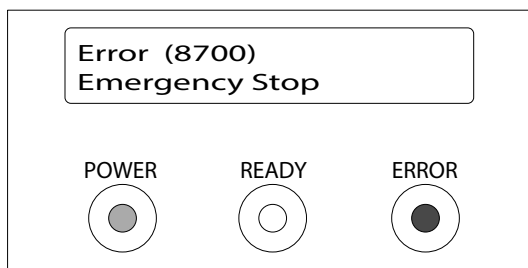


Table 11. List of Error

LCD display	Description of Error	How to restore
Emergency Stop	Emergency stop	Initialize or power OFF / ON
Head is Hot_Wait (Ready)	Cooling head	Wait for [Ready] indication
Error(8100) Cover is Open	Cover is open	Close the cover
Error(8300) Cut Ribbon	Ribbon damaged	Change the Ribbon Cartridge
Error(8400) No Ribbon	No ribbon	Set the Ribbon Cartridge
Error(9101) Head Unit	Head unit DOWN error during initialization	Power off the machine, then leave it for few minutes. Power it on again and if it does not restore, contact the distribution agent.
Error(9102) Head Unit	Head unit UP error during initialization	
Error(9110) Head Unit	Head unit UP error occurred while printing	
Error(9120) Head Unit	Head unit DOWN error occurred while printing	
Error(9201) Tray Unit	Load-time sensor detection error during initialization	
Error(9202) Tray Unit	Eject-time sensor detection error during initialization	
Error(9210) Tray Unit	Home position sensor error during load operation	
Error(9220) Tray Unit	Home position sensor error during eject operation	
Error(9230) Tray Unit	Eject sensor error while loading	
Error(9281) Tray Unit	Desynchronization occurred when eject motion was done while initializing	
Error(9283) Tray Unit	Desynchronization occurred when load movement was done while initializing	
Error(9291) Tray Unit	Desynchronization occurred while loading	
Error(92A1) Tray Unit	Desynchronization occurred while ejecting	
Error(92B1) Tray Unit	Desynchronization occurred during movement of Tray type detection	
Error(92C1) Tray Unit	Desynchronization occurred when print start position was moving	
Error(92C3) Tray Unit	Desynchronization occurred while printing	
Error(D101) Head Over Heat	Head unit over heated	
Error(D102) Head Low Temp	Head unit low temperature error	
Error(E102) Data Flash Error	Built-in data flash error	
Error(E201) ROM Write Error	External SDRAM check error	
Error(E211) Device Over Heat	Tray motor overheated	

13 Specification

Specification

Items	Specification
Power	A Type: AC100V-125V (50/60Hz) C Type: AC100V-240V (50/60Hz)
Measurement	222(W)×384(D)×228(H)mm
Weight (Volume)	7kg
Interface	USB2.0 (Hi-Speed), Ethernet
OS	Windows XP/7/8/8.1/10
Resolution	600dpi, 57mm
Consuming Power	In printing: less than 230W, In waiting: less than 40W
Condition Requirement	5~40°C, 10~90%RH
Storage Requirement	-20~60°C, 10~90%RH
Applicable Standards	UL, CE, FCC Class A, RoHS
Printing Speed	1.25mm/s
Printable Space	53×100mm
Attachment Measurement	104(W)×142.5(D)×10(H)mm
AC Adapter Spec.	Rated Input: AC100-240V(50/60Hz), 2A Rated Output: DC24V, 2.7A, MAX65W
AC Cord	A Type Length 1.2m 125v/7A C Type Length 1.2m 250v/2.5A
Consumables or Durables (Parts)	Thermal Head, Ribbon Cartridge, Fan Filter

Product life cycle

Items	Time to replace
Ribbon Cartridge	30,000 times (15,000 pcs, Depend on impression size)
Thermal Head	30,000 times (15,000 pcs, Depend on impression size)
Fan Filter	One year

This product complies with the CE mark directives.

CE mark indicates that the product is in compliance with the following EMC standards based on the EMC Directive.

- EN55022:2010 ClassA
- EN55024:2010
- EN61000-3-2:2014 ClassA
- EN61000-3-3:2013